

# GRAVEYARD GHOUL

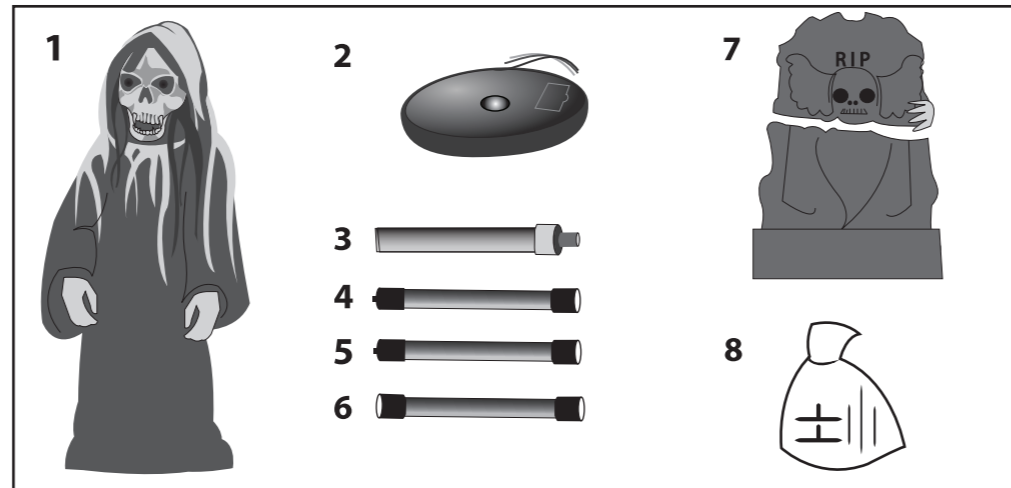
## INSTALLATION AND OPERATING INSTRUCTIONS

KEEP ALL PLASTIC AND WIRE PARTS AWAY FROM CHILDREN

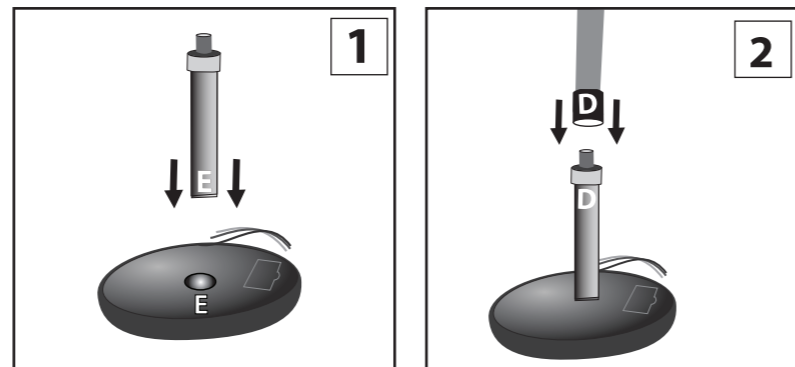
### Setup Instructions: Graveyard Ghoul

#### Parts (8):

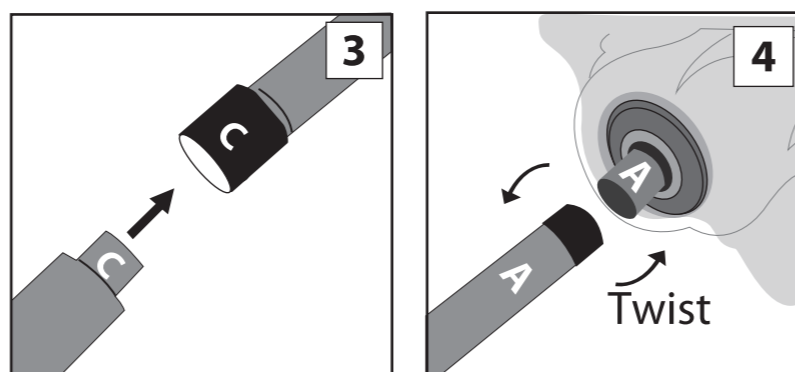
1. Head with Clothing
2. Base
3. Bottom Pole (Labeled D & E)
4. Lower Middle Pole (Labeled C & D)
5. Upper Middle Pole (Labeled B & C)
6. Top Pole (Labeled A & B)
7. Tombstone (2 halves)
8. Tombstone Stakes



- 1.) Insert Bottom Pole into Base matching E to E. Twist to lock.

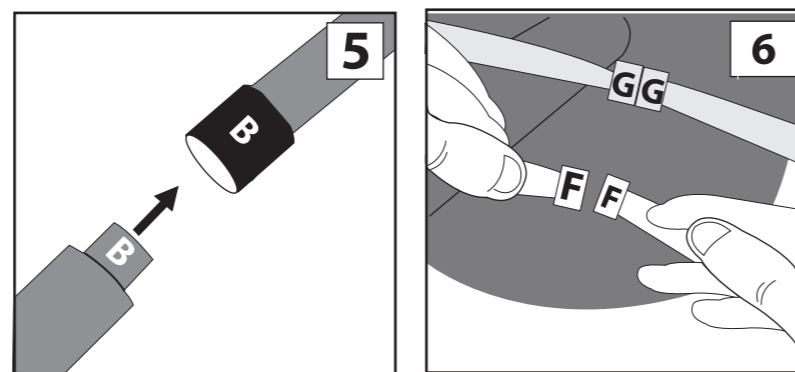


- 2.) Insert female end of Lower Middle Pole onto Bottom Pole matching D to D. Twist to lock.



- 3.) Insert male end of Lower Middle Pole into female end of Upper Middle Pole matching C to C. Twist to lock.

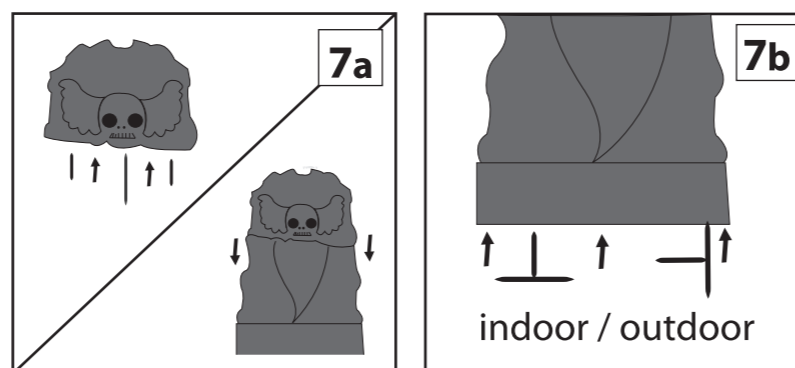
- 4.) Attach Head with clothing to Top Pole matching A to A. Twist to lock.



- 5.) Insert male end of Upper Middle Pole into female end of Top Pole matching B to B. Twist to lock.

- 6.) Snap connect all wiring by connecting plugs coming from inside Ghoul's clothing. (Match F to F, G to G.)

- 7.) Insert 3 spikes into pre-drilled holes in UPPER TOMBSTONE. Make sure to keep long metal spike in center. Connect UPPER TOMBSTONE to LOWER TOMBSTONE by inserting spikes into pre-drilled holes in LOWER TOMBSTONE. Press Top & Bottom halves of TOMBSTONE together. (See illustration 7a)



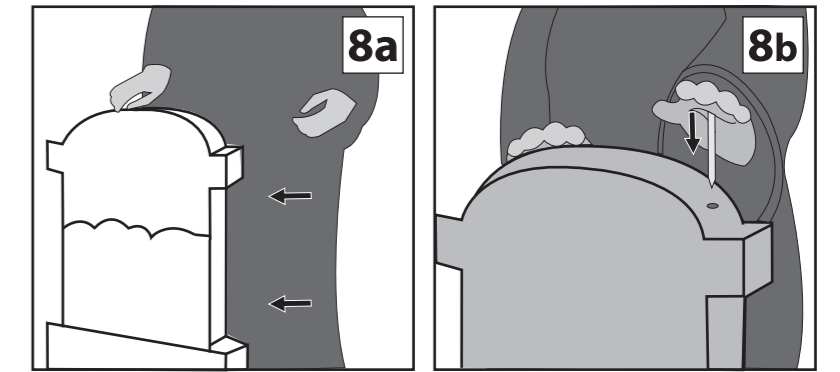
**Note:** (Indoor) Insert feet into bottom of LOWER TOMBSTONE as shown. (Outdoor) Turn feet 90° and insert, then insert opposite side of spike into soft ground. (See illustration 7b)

# GRAVEYARD GHOUL

## Setup Instructions: Graveyard Ghoul

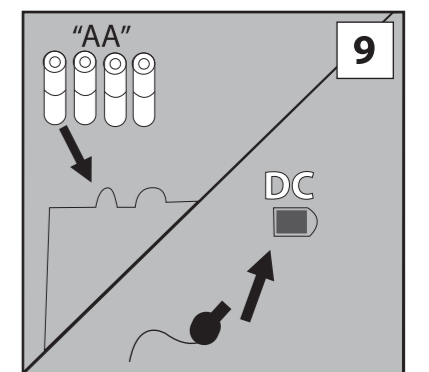
### Continued

- 8.) Make sure to keep TOMBSTONE close to the Ghoul and insert spikes, found in Ghoul's hands, into Top of Tombstone. (See illustration 8a & 8b)



**Note:** Use caution when inserting spikes into Tombstone, as spikes are fragile and may break.

- 9.) Insert 4 AA Alkaline batteries into the battery compartment located on the module, or connect DC adapter. (sold separately)



**Note:** Turn switch on top of Base to ON to operate in Sound/Motion activation mode. Leave switch in OFF position when not in use.

### Optional Footpad Setup

Follow Steps 1 through 9 on initial installation first.

1. Connect wire from the optional footpad to the jack labeled FOOTPAD located on the base.
2. Place the switch on the base into the 'FOOTPAD' position to enable FOOTPAD activation.
3. Step on FOOTPAD to activate the scary sequence.

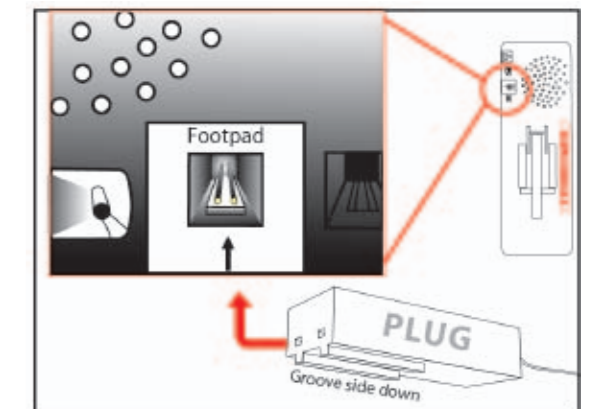
#### NOTE:

When plugging in, make sure pins line up properly with holes on plug. Align plug, groove side down, with the notch.

#### CAUTION!

Not aligning the plug to jack properly may cause permanent damage to Foot Pad jack of your item. Do not use excessive force when inserting plug.

\*Footpads are sold separately and can be purchased at [www.tekkytoys.com](http://www.tekkytoys.com)



**Outdoor Warnings:** For best overall performance, we recommend you operate your item in a sheltered outdoor area. We also recommend you bring your item indoors during adverse weather (extreme cold, strong winds and/or rain). This item operates best outdoors in temperatures above freezing (32°F). Tekky Toys recommends using fresh alkaline batteries for best operating performance.

### SMART PHONE SCAN SETUP VIDEO



**\*\*No weight should be placed onto item\*\***

**Warning!** This item is not a toy. For decoration only. Small parts, choking hazard. This product is intended for use by persons 15 years of age and older. Not intended for use by children ages 14 years and younger.

**WARNING**  
DO NOT TURN THIS ITEM ON UNTIL YOU HAVE COMPLETELY FINISHED ASSEMBLY.

Stay clear of item while operating.



Visit us:  
[www.tekkytoys.com](http://www.tekkytoys.com)

Requires 4 AA Batteries or optional DC Adapter (6V 2A)  
Surface washable only.  
ALL NEW MATERIALS:  
PLASTIC, POLYESTER,  
POLYESTER FIBER

GRAVEYARD GHOUL is a trademark of Tekky Toys.  
Copyright © 2011 Tekky Toys.  
All Rights Reserved.



**DO NOT RETURN THIS ITEM TO THE STORE!**  
If experiencing technical difficulties, please go to [www.tekkytoys.com](http://www.tekkytoys.com) for assistance.

