

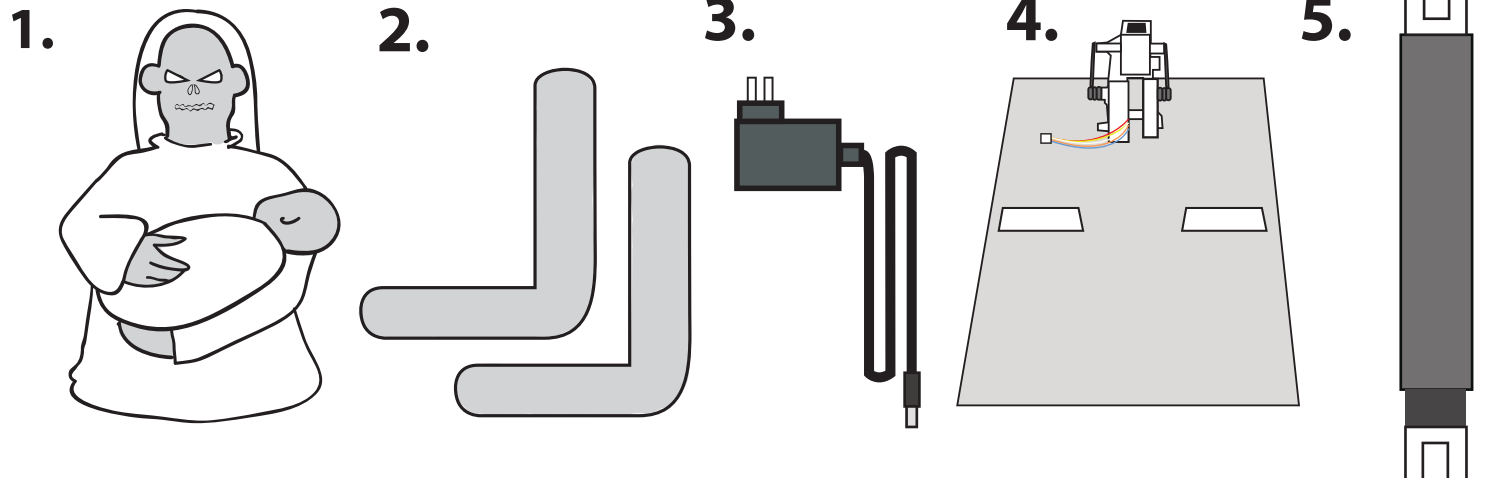
# GRUESOME GRANNY

## INSTALLATION AND OPERATING INSTRUCTIONS

KEEP ALL PLASTIC AND WIRE PARTS AWAY FROM CHILDREN

### PARTS

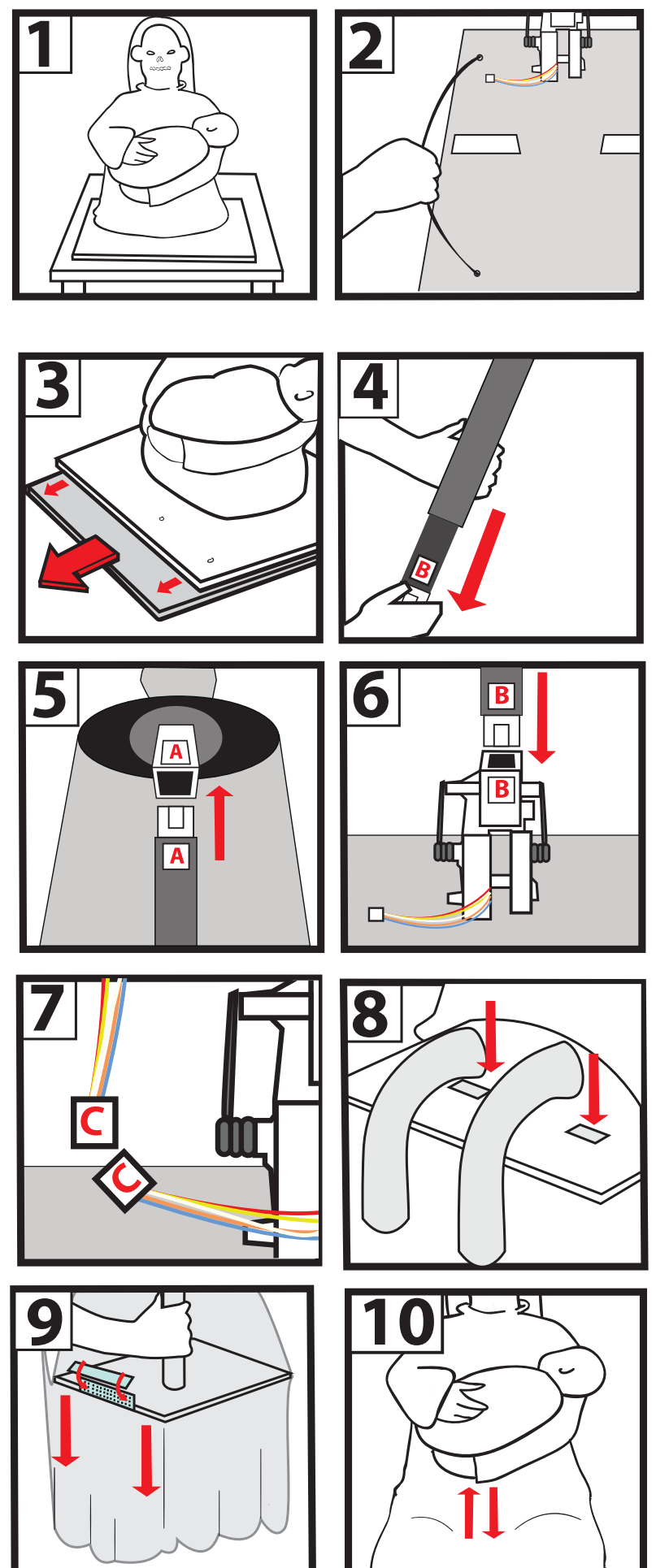
1. BODY WITH BABY
2. FOAM LEGS
3. 6V 2A DC ADAPTER
4. WOODEN BASE
5. METAL POLE



1. Remove **BODY WITH BABY, WOODEN BASE, FOAM LEGS, AND ADAPTER** from carton and place on a table.
2. Remove wire separating the **WOODEN BASE, METAL POLE, and ADAPTER** from the cardboard.
3. Remove cardboard from the underside of the **WOODEN BASE**.
4. Extend the **METAL POLE** until the **METAL POLE** is locked into place.
5. Snap lock **METAL POLE** to underside of head on **BODY WITH BABY**. (Match A to A)
6. Snap lock **METAL POLE** into **WOODEN BASE**. (Match B to B)
7. Connect cable located under clothing to cable coming from **WOODEN BASE**. (Match C to C)
8. Attach hook and loop fasteners on **FOAM LEGS** to hook and loop fasteners located on **WOODEN BASE**.
9. Pull clothing down to cover **WOODEN BASE** and attach hook and loop fasteners located under the back of the dress to the hook and loop fasteners located on the the back of the **WOODEN BASE**.
10. Gently position the right and left arms, pulling them down slightly.

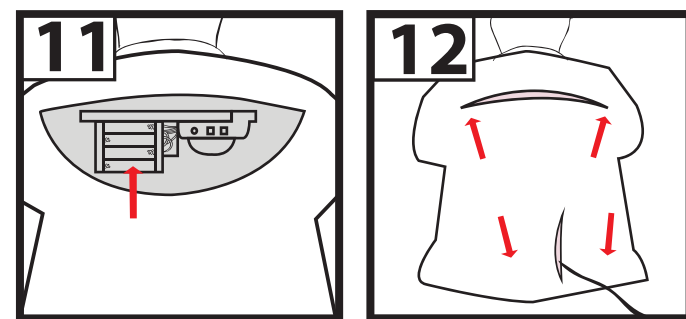
**Note:** Gruesome Granny will not function properly if the clothing is not attached to the **WOODEN BASE**.

**Important:** Leave a space between the left arm holding Baby and **FOAM LEGS** to assure rocking motion functions properly.



11. Open back of dress and insert 4 AA batteries (not included) into the battery compartment located on the back of the **BODY WITH BABY** or connect the **6V 2A DC ADAPTER** (included) and run the cord out of the opening located on the bottom of the dress.

**Note:** Turn on switch on **BODY WITH BABY** to ON position to operate in sound & motion activation mode. Leave switch in OFF position when not in use.

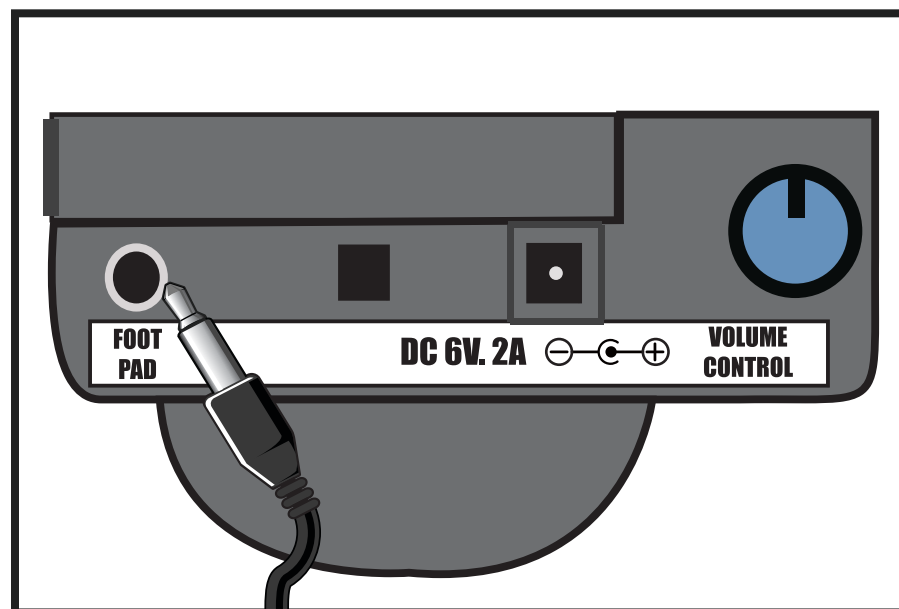


12. Close top and bottom portion of dress by attaching hook and loop. **See Illustration #12.**

## Optional Footpad Setup

Follow steps #1 through 11 on initial installation first.

1. Connect the cable from the optional footpad to the jack labeled FOOTPAD located on the base.
2. Place the switch on the base into the 'FOOTPAD' position to enable FOOTPAD activation.
3. Step on FOOTPAD to activate the scary sequence. (go to instruction #12 to continue setup)



\*Footpads are sold separately and can be purchased at [www.spirithalloween.com](http://www.spirithalloween.com)



Requires 4 'AA' Batteries  
or 6V 2A DC adapter (included)  
**Surface washable only.**  
ALL NEW MATERIALS:  
PLASTIC, POLYESTER,  
POLYESTER FIBER

GRUESOME GRANNY  
is a trademark of Spirit Halloween  
Copyright © 2013 Spirit Halloween  
All Rights Reserved.  
MADE IN CHINA

## SMART PHONE SCAN SETUP VIDEO



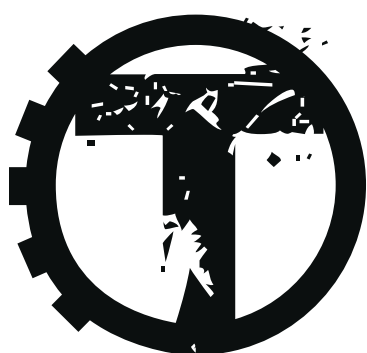
**\*\*No weight should be placed onto item\*\***

**\*\*For indoor use only\*\***

**Warning! This item is not a toy. For decoration only. Small parts, choking hazard.**  
This product is intended for use by persons 15 years of age and older.  
Not intended for use by children ages 14 years and younger.

**WARNING**  
**DO NOT TURN THIS ITEM ON UNTIL YOU HAVE COMPLETELY FINISHED ASSEMBLY.**

STAY CLEAR OF ITEM WHILE OPERATING



**TEKKY**

VISIT US AT [TEKKYTOYS.COM](http://TEKKYTOYS.COM)



**DO NOT RETURN THIS ITEM TO THE STORE!**  
If experiencing technical difficulties, please go to  
[www.tekkytoys.com](http://www.tekkytoys.com) for assistance.