

GHOST WOMAN OVER TOMBSTONE™

INSTALLATION AND OPERATING INSTRUCTIONS

KEEP ALL PLASTIC AND WIRE PARTS AWAY FROM CHILDREN

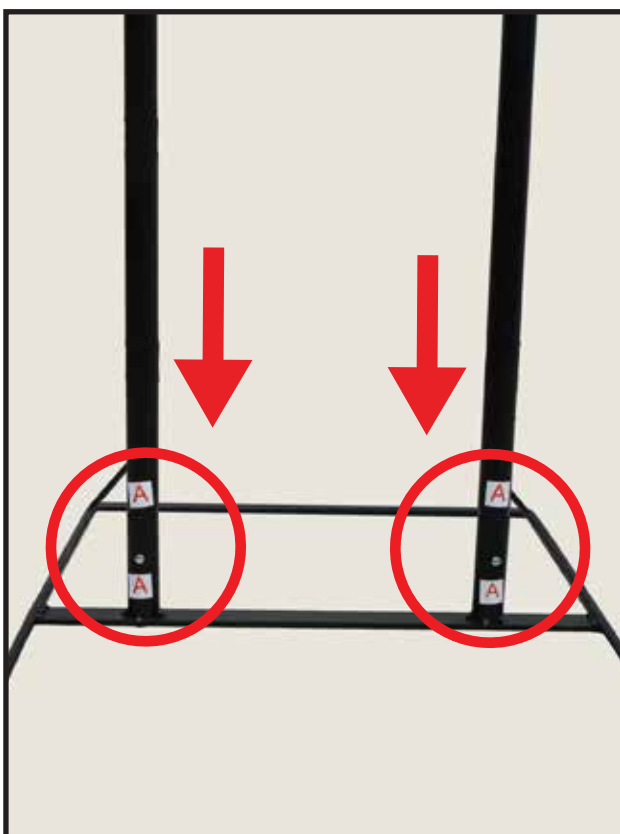
WARNING: DO NOT TURN ON THE PROP UNTIL FULLY ASSEMBLED. STAY CLEAR OF THE PROP WHILE OPERATING.

ESTIMATED ASSEMBLY TIME SEVEN MINUTES.

1. STAND
2. LOWER POLES
3. MODULE AND FRAME
4. UPPER POLES
5. HEAD, BODY AND HANDS
6. TOMBSTONE BOTTOM
7. TOMBSTONE TOP
8. TOMBSTONE SPIKES

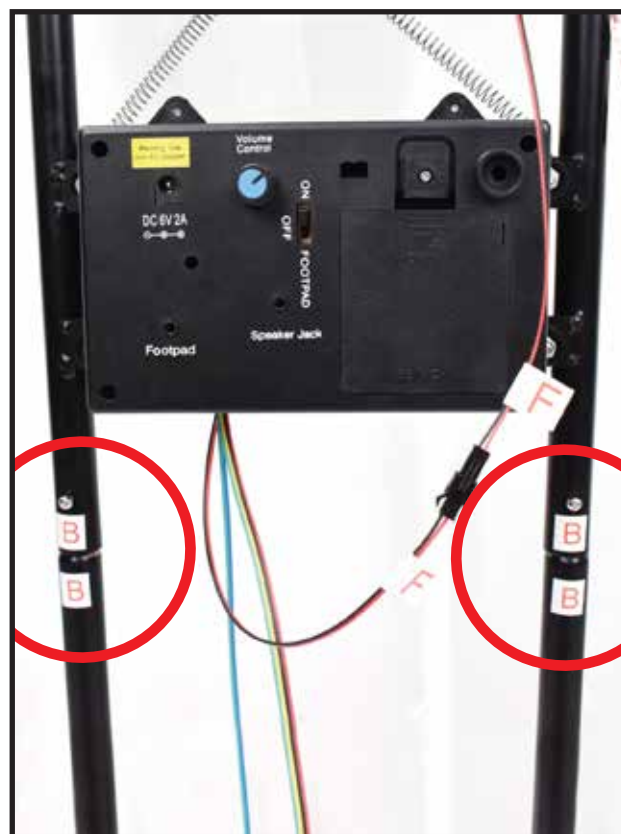


ASSEMBLY



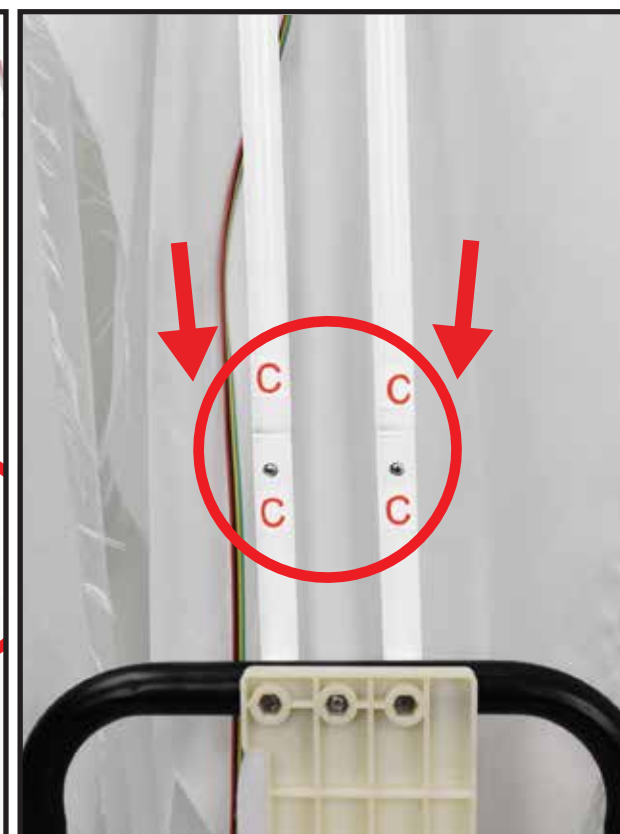
1. Snap lock the LOWER POLES labeled A to the STAND.

MATCH A TO A



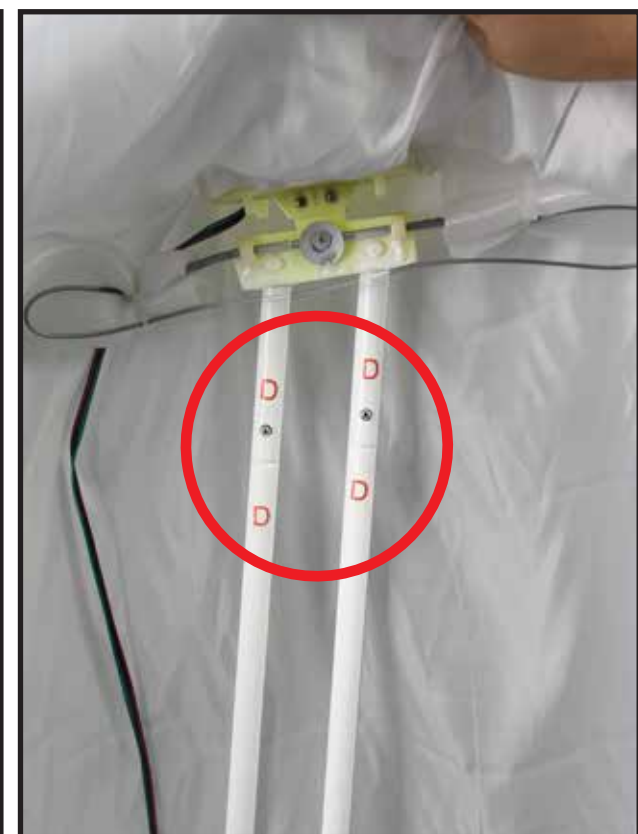
2. Snap lock the MODULE AND FRAME to the LOWER POLES.

MATCH B TO B



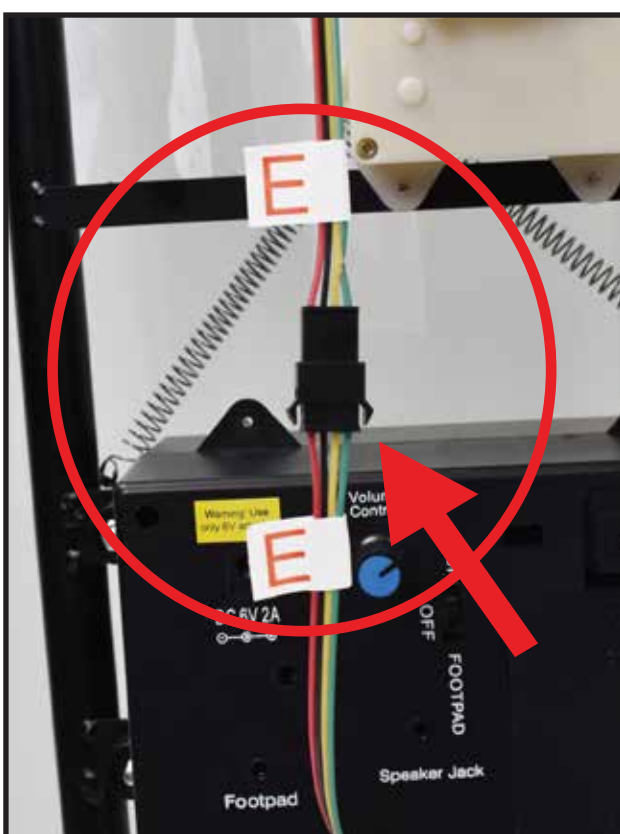
3. Snap lock the UPPER POLES labeled C to the MODULE AND FRAME.

MATCH C TO C



4. Raise the fabric on the HEAD, BODY AND HANDS. Snap lock the BODY to the UPPER POLES.

MATCH D TO D



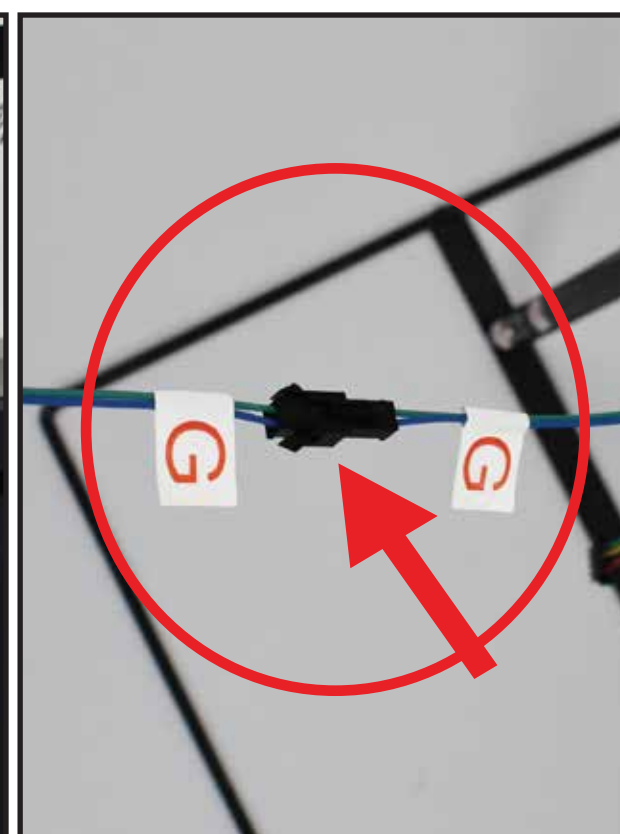
5. Connect the wire bundle from the CONTROL BOX to the wire bundle on the HEAD, BODY AND HANDS.

MATCH E TO E



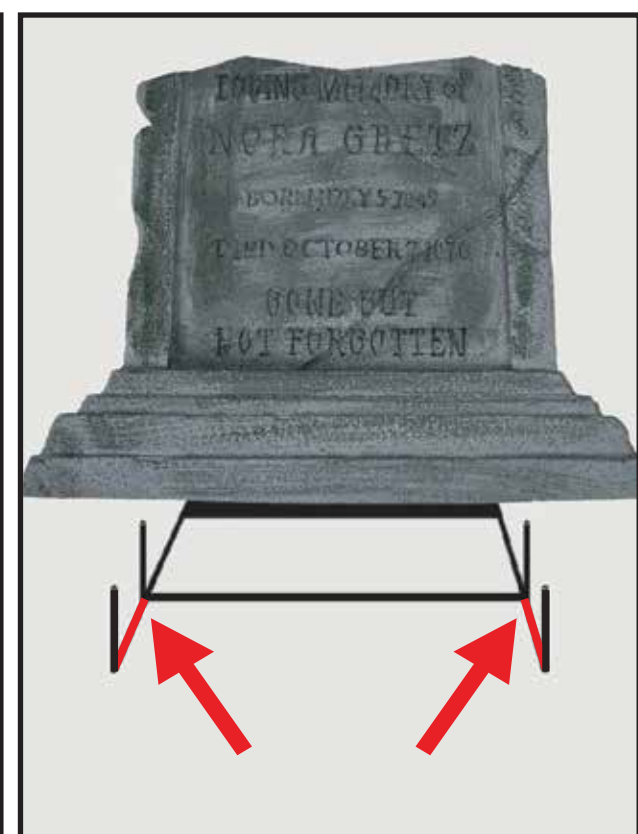
6. Connect the wire bundle from the CONTROL BOX to the wire bundle on the MODULE AND FRAME.

MATCH F TO F

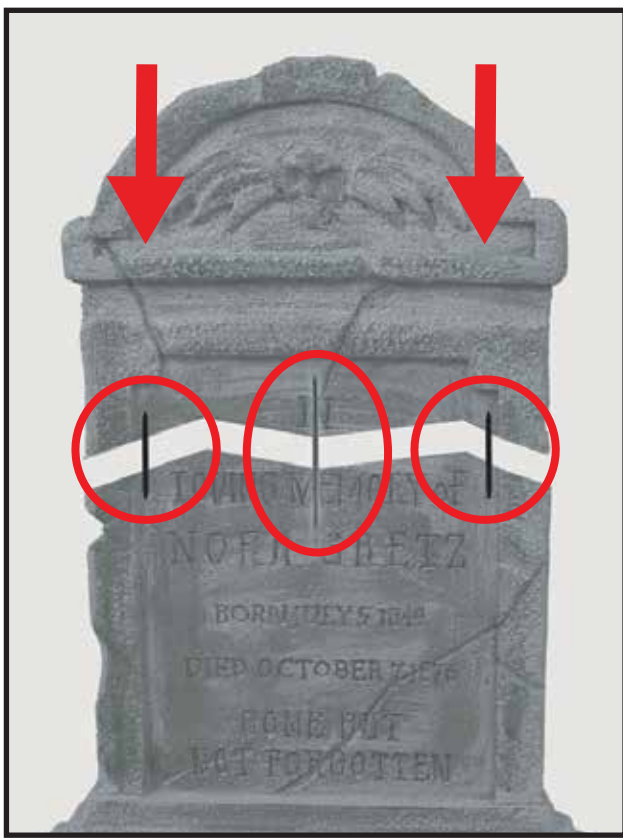


7. Connect the wire from the TOMBSTONE to the wire located on the MODULE AND FRAME.

MATCH G TO G



8. Insert the TOMBSTONE BOTTOM between the posts located on the front of the STAND. Press firmly to secure the TOMBSTONE BOTTOM.



9. Insert three TOMBSTONE SPIKES into the TOMBSTONE BOTTOM and press down the TOMBSTONE TOP to secure.



OPTIONAL FOOTPAD SET UP

FOOTPAD IS NOT INCLUDED. MUST BE PURCHASED SEPARATELY.

1. Insert the cable from optional footpad into the jack labeled FOOTPAD on the CONTROL BOX.
2. Place the switch in the FOOTPAD position to enable FOOTPAD activation.
3. Step on the FOOTPAD to activate the scary sequence!
* Footpads are sold separately and can be purchased at www.tekkyaccessories.com



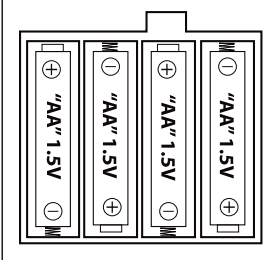
OPTIONAL EXTERNAL SPEAKER SET UP

EXTERNAL SPEAKER IS NOT INCLUDED. MUST BE PURCHASED SEPARATELY.

1. Plug speaker cord into the jack labeled SPEAKER JACK located on the CONTROL BOX.
2. Use volume knob on external speaker to control volume levels.



Battery Diagram

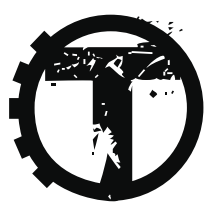


BATTERY INSTRUCTIONS AND CAUTIONS

Battery installation and removal should be performed by an adult. Remove batteries when not in use. Use only batteries recommended in the instructions. Do not mix new and used batteries. Do not mix alkaline, carbon-zinc, nickel-cadmium, rechargeable or different types of batteries. Be mindful to insert batteries with the correct polarity (+/-) as indicated. Remove all exhausted batteries. Rechargeable batteries are only to be charged under adult supervision. Rechargeable batteries are to be removed from the item before being charged. Non-rechargeable batteries are not to be recharged. The supply terminals are not to be short-circuited. Always dispose of exhausted batteries properly. Do NOT dispose of batteries in fire, they may leak or explode.

Warning! This item is not a toy. For decoration only. Small parts, choking hazard. This product is intended for use by persons 15 years of age and older. Not intended for use by children ages 14 years and younger.

WARNING
DO NOT TURN ITEM ON UNTIL YOU HAVE COMPLETELY FINISHED ASSEMBLY.
STAY CLEAR OF ITEM WHILE OPERATING.
DO NOT PLACE ITEM ON UNEVEN GROUND.
DO NOT PLACE WEIGHT ON ITEM WHILE IN OPERATION.



TEKKY

visit us at tekkydesign.com

Requires 6V 2A ADAPTER (not included) or 4AA batteries (not included)

ALL NEW MATERIALS:
METAL, FOAM, PLASTIC, POLYESTER
Surface washable only.

GHOST WOMAN OVER TOMBSTONE™ is a trademark of Tekky. Copyright © 2022 Tekky. All Rights Reserved. MADE IN CHINA



DO NOT RETURN THIS ITEM TO THE STORE!
If experiencing technical difficulties, please go to www.tekkydesign.com for assistance.

SMART PHONE SCAN
SETUP VIDEO

