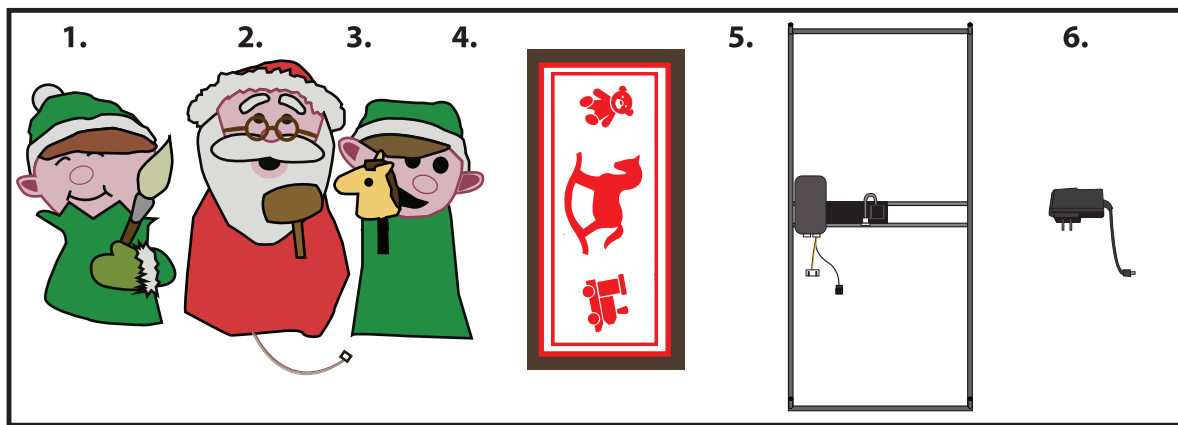


CHRISTMAS POP UP TOY BOX™

Installation and Operating Instructions

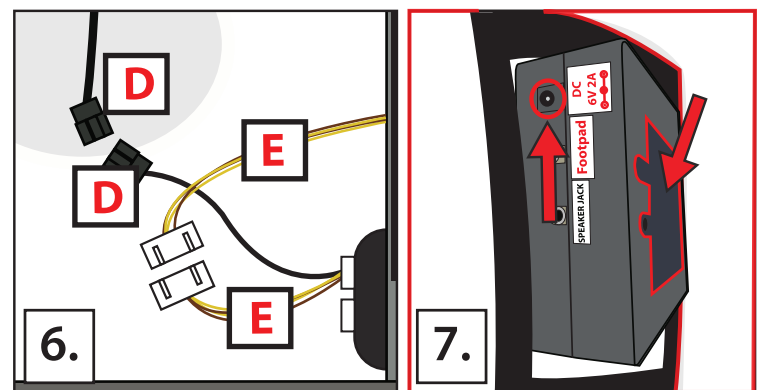
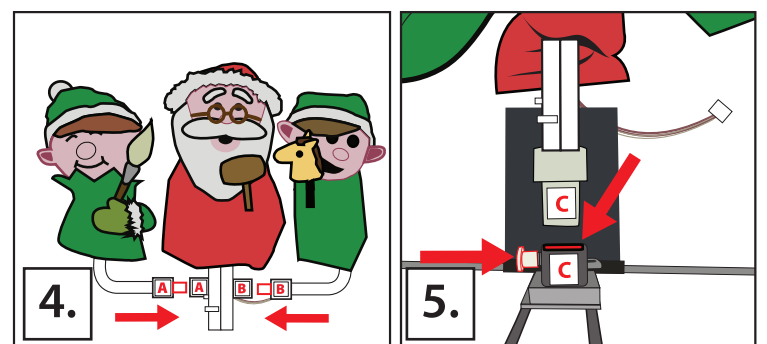
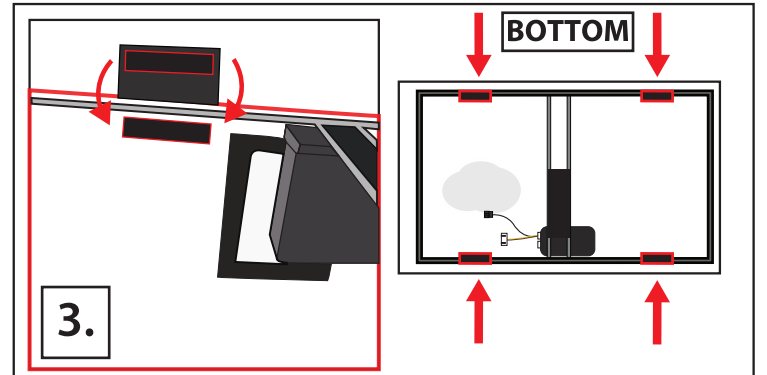
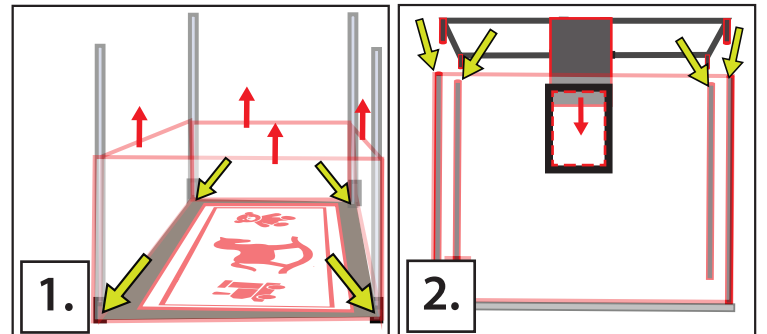
Keep all plastic and wire parts away from children.



PARTS

1. ELF WITH BRUSH
2. SANTA AND MODULE
3. ELF WITH TOY
4. UPPER FRAME AND LID
5. FRAME BASE
6. ADAPTER

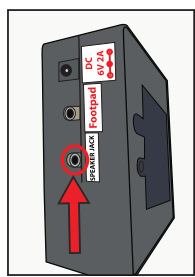
1. Place the **UPPER FRAME AND LID** face down on the ground with the image of the bear, horse, and train facing downward. Reach inside and insert all four metal poles into the corners of the **UPPER FRAME**. Pull all four fabric sides of the **UPPER FRAME AND LID** upward.
2. Insert the **FRAME BASE** into the **UPPER FRAME AND LID** with the control box closest to the opening in the fabric.
3. Attach all four tabs of hook and loop fastener securing the fabric over bottom of the frame. For optimal appearance pull the fabric tight while securing the hook and loop fasteners.
4. (**TURN UPPER FRAME AND LID RIGHT SIDE UP**) Insert pole below the **ELF WITH BRUSH** into the **MODULE** located below **SANTA**. Insert the pole below the **ELF WITH TOY** into the **MODULE** below **SANTA**. (Match A to A and B to B)
5. Open lid on **UPPER FRAME AND LID**. Push in circular locking pin located on the **FRAME BASE** and insert the **MODULE** pole located below **SANTA** into the **BASE**. Release locking pin when **SANTA AND MODULE** are firmly seated. (Match C to C)
6. Connect wires located inside the assembled **UPPER FRAME AND LID**. Connect (E to E) and (D to D)
7. Open flap on the back of **CHRISTMAS POP UP TOY BOX™** to locate the control box inside the fabric. Connect 6V2A **ADAPTER** (included) or insert 4 AA alkaline batteries (not included) into the battery compartment located on the control box. Turn the switch to the ON position to operate in Sound activation mode. Make a loud sound (clap) to activate the item. Adjust volume control knob as needed, close the back flap, and close **CHRISTMAS POP UP TOY BOX™** top. Turn item OFF when not in use.



OPTIONAL EXTERNAL SPEAKER SET UP

EXTERNAL SPEAKER IS NOT INCLUDED. MUST BE PURCHASED SEPARATELY.

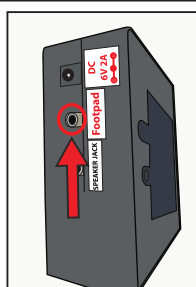
1. Plug speaker cord into the jack labeled **SPEAKER JACK** located on the side of the control box.
2. Use volume knob on external speaker to control volume levels.



OPTIONAL FOOTPAD SET UP

FOOTPAD IS NOT INCLUDED. MUST BE PURCHASED SEPARATELY.

1. Insert the cable from optional footpad into the jack labeled **FOOTPAD** on the control box.
2. Place the switch in the **FOOTPAD** position to enable **FOOTPAD** activation.
3. Step on the **FOOTPAD** to activate the sequence!



* Footpads and adapters are sold separately and can be purchased at www.tekkyaccessories.com

SMART PHONE SCAN SETUP VIDEO



BATTERY INSTRUCTIONS AND CAUTIONS

Battery installation and removal should be performed by an adult. Remove batteries when not in use. Use only batteries recommended in the instructions. Do not mix new and used batteries. Do not mix alkaline, carbon-zinc, nickel-cadmium, rechargeable or different types of batteries. Be mindful to insert batteries with the correct polarity (+/-) as indicated. Remove all exhausted batteries. Rechargeable batteries are only to be charged under adult supervision. Rechargeable batteries are to be removed from the item before being charged. Non-rechargeable batteries are not to be recharged. The supply terminals are not to be short-circuited. Always dispose of exhausted batteries properly. Do NOT dispose of batteries in fire, they may leak or explode.

Warning! This item is not a toy. For decoration only. Small parts, choking hazard. This product is intended for use by persons 15 years of age and older. Not intended for use by children ages 14 years and younger.

WARNING

DO NOT TURN ITEM ON UNTIL YOU HAVE COMPLETELY FINISHED ASSEMBLY.

STAY CLEAR OF ITEM WHILE OPERATING.

DO NOT PLACE ITEM ON UNEVEN GROUND.

DO NOT PLACE WEIGHT ON ITEM WHILE IN OPERATION.



visit us at tekkydesign.com
Requires 6V 2A ADAPTER (included) or 4AA batteries (not included)

ALL NEW MATERIALS:
METAL, FOAM, PLASTIC, POLYESTER
Surface washable only.

CHRISTMAS POP UP TOY BOX™ is a trademark of Tekky. Copyright © 2019 Tekky. All Rights Reserved. MADE IN CHINA



DO NOT RETURN THIS ITEM TO THE STORE! If experiencing technical difficulties, please go to www.tekkydesign.com for assistance.