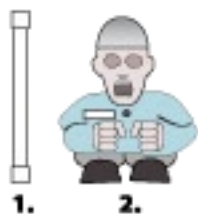


DEATH ROW

INSTALLATION AND OPERATING INSTRUCTIONS KEEP ALL PLASTIC AND WIRE PARTS AWAY FROM CHILDREN

PARTS INCLUDED

1. POLE
2. HEAD & HANDS WITH CLOTHES & BASE



**Make sure to seat Death Row on a level chair when setting up!
If the BASE is not level, Death Row will NOT function correctly.**

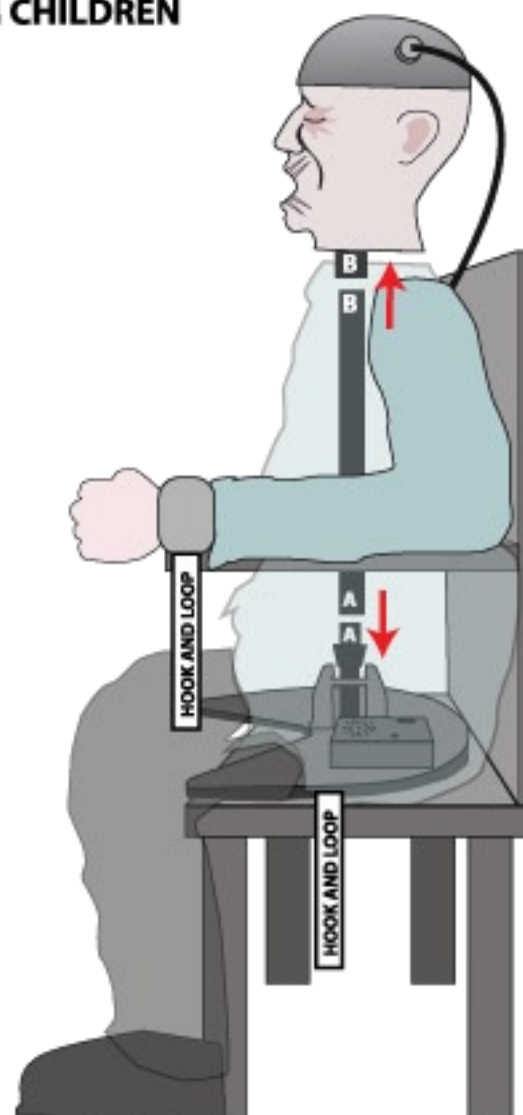
- 1). Open the zipper located under the back of Death Row's shirt and insert **POLE** into back of **HEAD & HANDS WITH CLOTHES & BASE**. Snap lock the **POLE** into the base of the neck. (Match **B** to **B**) Press until it clicks into place.
- 2). Insert **POLE** into **BASE**. (Match **A** to **A**) Press until it clicks into place.
- 3). Wrap **HOOK AND LOOP** straps under chair (not included), pull very taut, and fasten to each other.

Important: Death Row will function best with the **BASE** flat, or tilted slightly forward. If the **BASE** is tilted backward, Death Row will not function optimally.

- 4). Wrap **HOOK AND LOOP** straps located under wrists around arms of chair, and fasten to each other.
- 5). Insert 4 brand new AA Alkaline batteries into the battery compartment located on **BASE** or attach optional 6V 2A DC adapter to the jack located on top of the **BASE**. See **BASE DIAGRAM** for battery and adapter jack location.

Note: Turn switch to the ON position to operate in Sound or Motion activation mode. Make a loud sound (clap), or move in front of the item to activate. Turn item OFF when not in use.

- 6). Close zipper located under the back of Death Row's shirt.



OPTIONAL FOOTPAD SETUP

Follow initial installation instruction first.

1. Connect wire from optional footpad to the jack labeled FOOTPAD located on the base.
2. Place the switch on the base into 'FOOTPAD' position to enable FOOTPAD activation.
3. Step on FOOTPAD to activate the scary sequence.

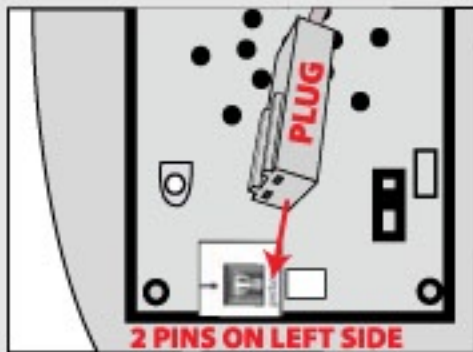
NOTE:

When plugging in, make sure pins line up properly with holes on plug. Align plug, groove side down, with the notch.

CAUTION!

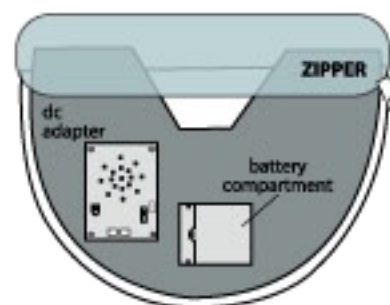
Not aligning the plug to jack properly may cause permanent damage to footpad jack of your item. **DO NOT** use excessive force when inserting plug.

*Footpads are sold separately and can be purchased online at: www.spirithalloween.com



2 PINS ON LEFT SIDE

BASE DIAGRAM



MIT Multiple Trigger Set-up Instructions

Note:

Use in conjunction with any item that transmits MIT signal. Go to www.tekkytoys.com for a list of items.

1. Plug MIT cable into MIT jacks on both items.
2. Turn switch on Death Row to footpad/MIT to activate.
3. Activate transmitting item to force activation of Death Row.



VISIT US: WWW.TEKKYTOYS.COM

Surface Washable Only.

ALL NEW MATERIALS: PLASTIC, POLYESTER, POLYESTER FIBER

Battery Powered:

Requires 4 AA Alkaline Batteries (not included)

DC Adapter Ready 6V 2A (not included)

** Footpad and DC adapter sold separately and can be purchased at: www.spirithalloween.com

Death Row is a trademark of Tekky Toys.

Copyright © 2012 Tekky Toys.

All Rights Reserved.

MADE IN CHINA

SMART PHONE SCAN SETUP VIDEO



****No weight should be placed onto item****

Warning! This item is not a toy. For decoration only. Small parts, choking hazard.

This product is intended for use by persons 15 years of age and older.

Not intended for use by children ages 14 years and younger.

WARNING

DO NOT TURN THIS ITEM ON UNTIL YOU HAVE COMPLETELY FINISHED ASSEMBLY.

Stay clear of item while operating.

