

DEARLY DEPARTED™

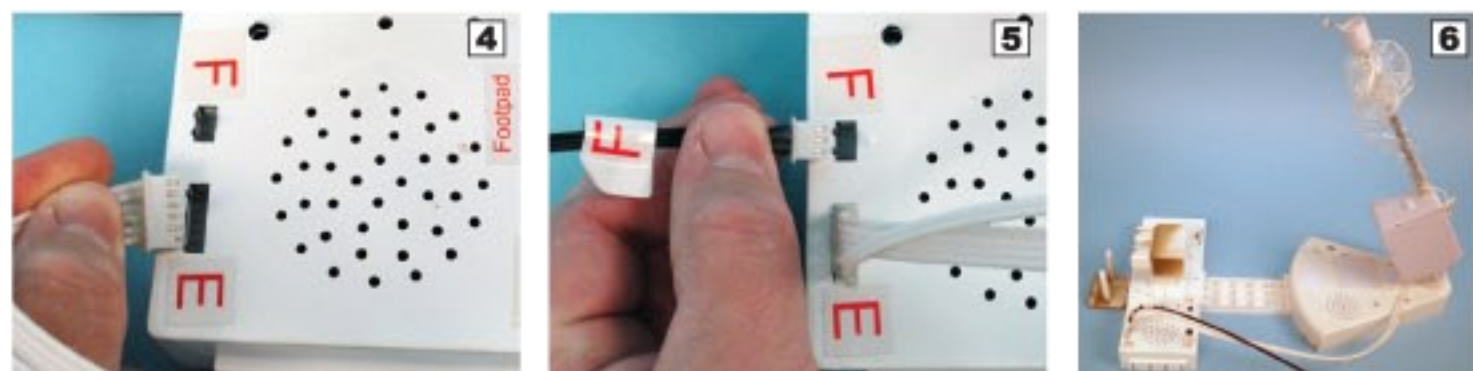
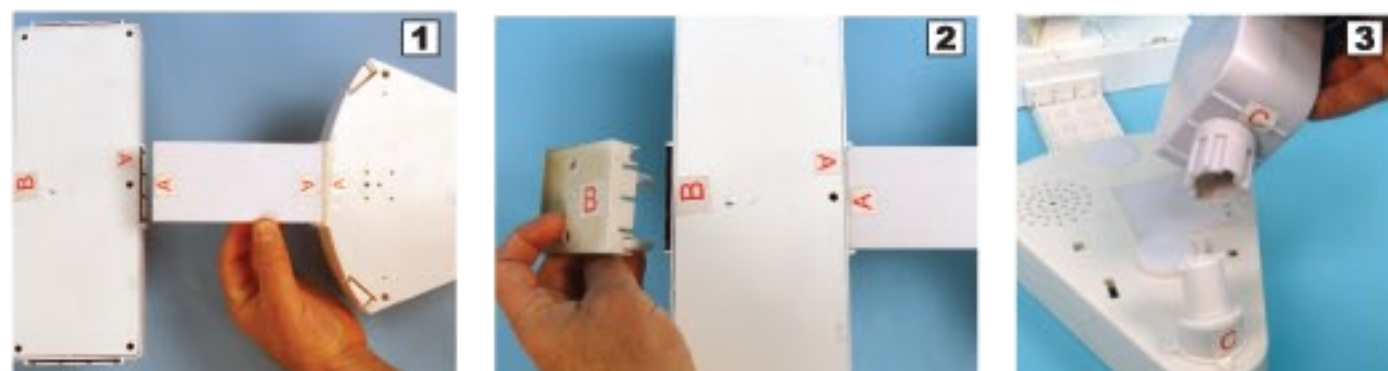
Setup instructions:

PARTS:

1. SPLITTING TOMBSTONE
2. MAIN MODULE
3. FOOT (labeled A)
4. BASE
5. FOOT 2 (labeled B)
6. HEAD WITH VEIL
7. TELESCOPING MODULE
8. SMALL TOMBSTONE
9. FOG MACHINE ATTACHMENT CABLE



1. Insert FOOT labeled A into bottom of BASE. Then, insert into bottom of MAIN MODULE. Press FOOT firmly into sockets until flush.
2. Insert FOOT 2 into bottom of MAIN MODULE matching B to B.
3. Attach TELESCOPING MODULE to BASE matching C to C. Twist to lock.



4. Insert cable E into MAIN MODULE matching E to E.
5. (Complete Step 5 only if attaching Fog Machine) Insert cable F into MAIN MODULE matching F to F.
6. Photo of fully assembled MODULE ASSEMBLY.

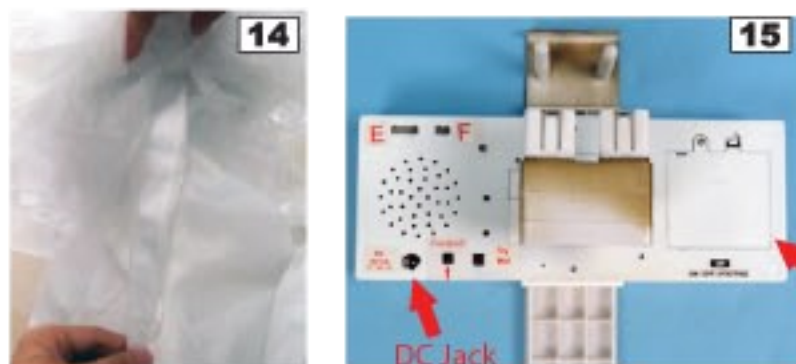


7. Hold SPLITTING TOMBSTONE at top firmly, and match holes at bottom to prongs on MAIN MODULE.
8. Press holes onto prongs until lock into place.



9. Insert SMALL TOMBSTONE on spikes on FOOT 2 matching pre-drilled holes to spikes. Press firmly down on SMALL TOMBSTONE.
10. Photo of fully assembled TOMBSTONE from side.

11. Insert top of TELESCOPING MODULE into bottom fabric
12. Open Velcro behind HEAD and attach HEAD to TELESCOPING MODULE, matching D to D.
13. Attach wire from HEAD to wire from TELESCOPING MODULE.



14. Seal Velcro compartment behind HEAD.
15. Insert 4 brand new, fresh AA batteries into compartment located on base, or connect (optional) 6V 2A DC adapter (sold separately).

Battery Compartment.

DEARLY DEPARTED™

Setup instructions:

Continued



16. Pull Veil down to cover BASE.

Turn switch on top of MAIN MODULE to ON to operate in Timer/Sound mode (item will function with 2 minute breaks between cycles - or, clap during 2 minute breaks to instantly start playing again). Leave switch in OFF position when not in use.

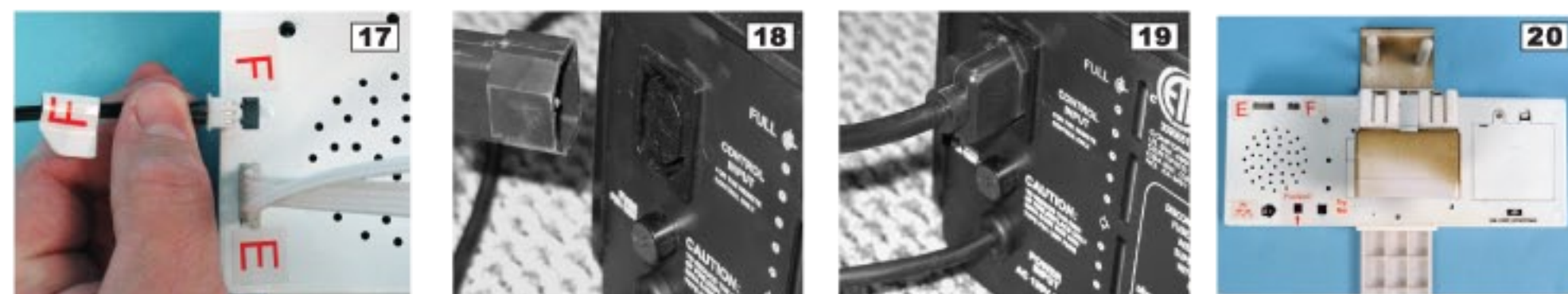
Hints for better performance:

Make sure to place the DEARLY DEPARTED on level ground to ensure best operation. Keep area around DEARLY DEPARTED clear of obstructions.



Optional FOG MACHINE Setup Instructions:

FOG MACHINE IS NOT INCLUDED. MUST BE PURCHASED SEPARATELY.



Your FOG MACHINE (select modles) can be used in connection with this item. Only attach a FOG MACHINE as instructed below.

***** Make sure DEARLY DEPARTED is set to the OFF position and your FOG MACHINE is not turned on*****

1. (refer to PHOTO 17) Insert cable F into MAIN MODULE matching F to F.
2. (refer to PHOTOS 18 & 19) Plug large end of FOG CORD into back of your FOG MACHINE. If large end of FOG CORD does not interface with you FOG MACHINE, do NOT use fog attachment!!
3. (refer to PHOTO 20) Make sure your FOG MACHINE is heated up properly, then turn DEARLY DEPARTED switch to ON position. If fog does not appear from your FOG MACHINE, try pressing the relay switch on the BASE. If fog continues to not appear, do NOT use fog attachment!!

Caution:

Do not touch DEARLY DEPARTED, cords, or any part connected to DEARLY DEPARTED when it is plugged in.
Do not operate DEARLY DEPARTED in wind/rain.
Do not operate DEARLY DEPARTED until you have completely finished assembly.
For best overall performance, please shut off DEARLY DEPARTED when not in use.
Do not tamper with MAIN MODULE or FOG CORD whatsoever. Any Warranty voided if any part is tampered with.
USE SAFETY when using Fog Machine attachment, and strictly adhere to all printed Fog Machine Warnings.

Optional Footpad Setup

Follow initial installation instructions first.

1. Connect wire from the optional footpad to the jack labeled FOOTPAD located on the base.
2. Place the switch on the base into the "FOOTPAD" position to enable FOOTPAD activation.
3. Step on FOOTPAD to activate the scary sequence.

*footpads are sold separately and can be purchased at www.tekkytoys.com

***** No weight should be placed on the item. *****

Create your own Halloween scene with all of Tekky Toys' animated products!
www.tekkytoys.com



STOP DO NOT RETURN THIS ITEM TO THE STORE!
If experiencing technical difficulties, please go to www.tekkytoys.com.



DEARLY DEPARTED is a trademark of Tekky Toys.
Copyright © 2010 Tekky Toys. All Rights Reserved.
MADE IN CHINA

STOP DO NOT RETURN THIS ITEM TO THE STORE!
If experiencing technical difficulties, please go to www.tekkytoys.com.