

GHASTLY GRAVEDIGGER ANIMATRONIC DECORATION™

INSTALLATION AND OPERATING INSTRUCTIONS

KEEP ALL PLASTIC AND WIRE PARTS AWAY FROM CHILDREN.

WARNING: DO NOT TURN ON THE PROP UNTIL FULLY ASSEMBLED. STAY CLEAR OF THE PROP WHILE OPERATING.
ESTIMATED ASSEMBLY TIME: 6 MINUTES.

PARTS



1.



2.



3.



4.



5.



6.



7.



8.



9.

1. METAL BASE
2. LEG POLES (2)
3. SHOES

4. WAIST FRAME
5. SPINE FRAME
WITH CONTROL BOX

6. HEAD & BODY
WITH MODULE
7. LEFT ARM WITH LANTERN

8. RIGHT ARM
9. 6V 2A DC ADAPTER

ASSEMBLY



1. Insert and snap lock the LEG POLES into the METAL BASE.
(Match A to A x2)



2. With the front of the SHOES facing away from the BACK label of the METAL BASE, slide the SHOES over the LEG POLES.



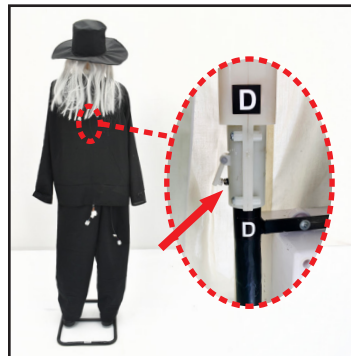
3. With the HEAD & BODY WITH MODULE's BACK label facing the BACK label of the METAL BASE, slide the pant legs over the LEG POLES.



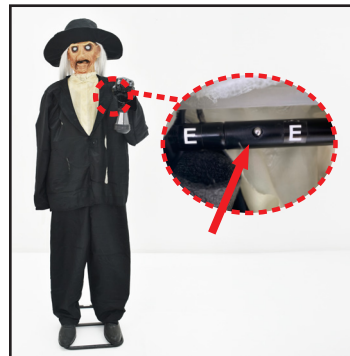
4. Insert and snap lock the WAIST FRAME into the LEG POLES.
(Match B to B x2)



5. Insert and snap lock the SPINE FRAME WITH CONTROL BOX into the WAIST FRAME.
(Match C to C)



6. Insert and snap lock the HEAD to the SPINE FRAME WITH CONTROL BOX.
(Match D to D)

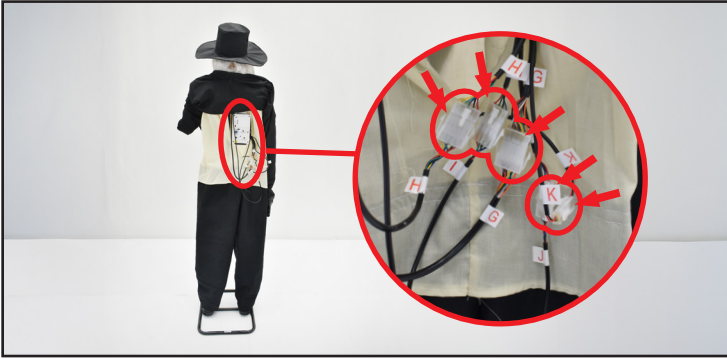


7. Slide the LEFT ARM POLE WITH LANTERN up the left sleeve. Insert and snap lock the LEFT ARM POLE into the HEAD & BODY WITH MODULE.
(Match E to E)



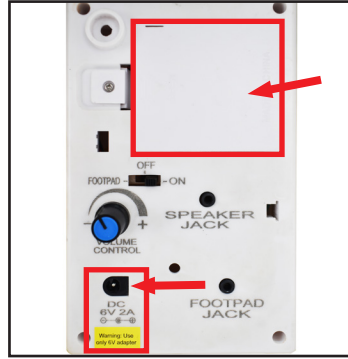
8. Slide the RIGHT ARM up the right sleeve. Insert and snap lock the RIGHT ARM POLE into the HEAD & BODY WITH MODULE.
(Match F to F)

ASSEMBLY

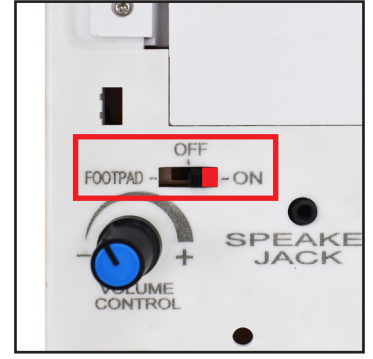


9. Connect the wires to the CONTROL BOX:
(Match G to G - HEAD Movement)
(Match H to H - RIGHT ARM Movement)
(Match I to I - LED Eyes and Mouth Movement)
(Match J to J - Human Sensor)
(Match K to K - LANTERN LED)

OPERATING INSTRUCTIONS



10. Insert 4 AA batteries (not included) into the battery compartment.
OR
Insert the 6V 2A DC ADAPTER into the CONTROL BOX (included).



11. Move the switch to the ON position. Make a loud sound (clap) or move in front of the item to activate.

Move the switch to the OFF position when not in use.

OPTIONAL FOOTPAD DEMO AND EXTERNAL SPEAKER SETUP

OPTIONAL FOOTPAD SETUP

FOOTPAD IS NOT INCLUDED. MUST BE PURCHASED SEPARATELY.

1. Insert the cable from optional footpad into the jack labeled FOOTPAD JACK located on the CONTROL BOX.
2. Place the power switch to the FOOTPAD position to enable demo activation.
3. Step on the footpad to activate the scary sequence!

* **Footpads are sold separately and can be purchased at www.tekkyaccessories.com.**



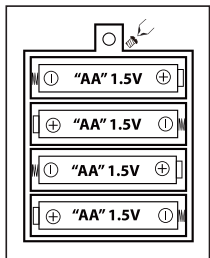
OPTIONAL EXTERNAL SPEAKER SETUP

EXTERNAL SPEAKER IS NOT INCLUDED. MUST BE PURCHASED SEPARATELY.

1. Plug speaker cord into the jack labeled SPEAKER JACK located on the CONTROL BOX.
2. Turn the VOLUME CONTROL knob on the CONTROL BOX to highest level and use your external speaker's volume control to adjust volume level.



Battery Diagram



BATTERY INSTRUCTIONS AND CAUTIONS

Battery installation and removal should be performed by an adult.
Remove batteries when not in use.
Use only batteries recommended in the instructions.
Do not mix new and used batteries.
Do not mix alkaline, carbon-zinc, nickel-cadmium, rechargeable or different types of batteries.
Be mindful to insert batteries with the correct polarity (+/-) as indicated.
Remove all exhausted batteries.
Rechargeable batteries are only to be charged under adult supervision.
Rechargeable batteries are to be removed from the item before being charged.
Non-rechargeable batteries are not to be recharged.
The supply terminals are not to be short-circuited.
Always dispose of exhausted batteries properly.
Do NOT dispose of batteries in fire, they may leak or explode.

Warning! This item is not a toy. For decoration only. Small parts, choking hazard. This product is intended for use by persons 15 years of age and older. Not intended for use by children ages 14 years and younger.

WARNING!
DO NOT TURN ITEM ON UNTIL YOU HAVE COMPLETELY FINISHED ASSEMBLY.
STAY CLEAR OF ITEM WHILE OPERATING.
DO NOT PLACE ITEM ON UNEVEN GROUND.
DO NOT PLACE WEIGHT ON ITEM WHILE IN OPERATION UNLESS ON METAL BASE.



Visit us at tekkydesign.com

Requires 4 AA batteries
(not included) or
6V 2A DC adapter (included).

ALL NEW MATERIAL ONLY:
METAL, PLASTIC, FABRIC,
POLYPROPYLENE FOAM.
Surface washable only.

Ghastly Gravedigger
Animatronic Decoration™
is a trademark of Tekky.
Copyright ©2011 Tekky.
All Rights Reserved.
FUN97031

MADE IN CHINA



DO NOT RETURN THIS ITEM TO THE STORE!
If experiencing technical difficulties, please go to
www.tekkydesign.com for assistance.



SMART PHONE SCAN
SETUP VIDEO

