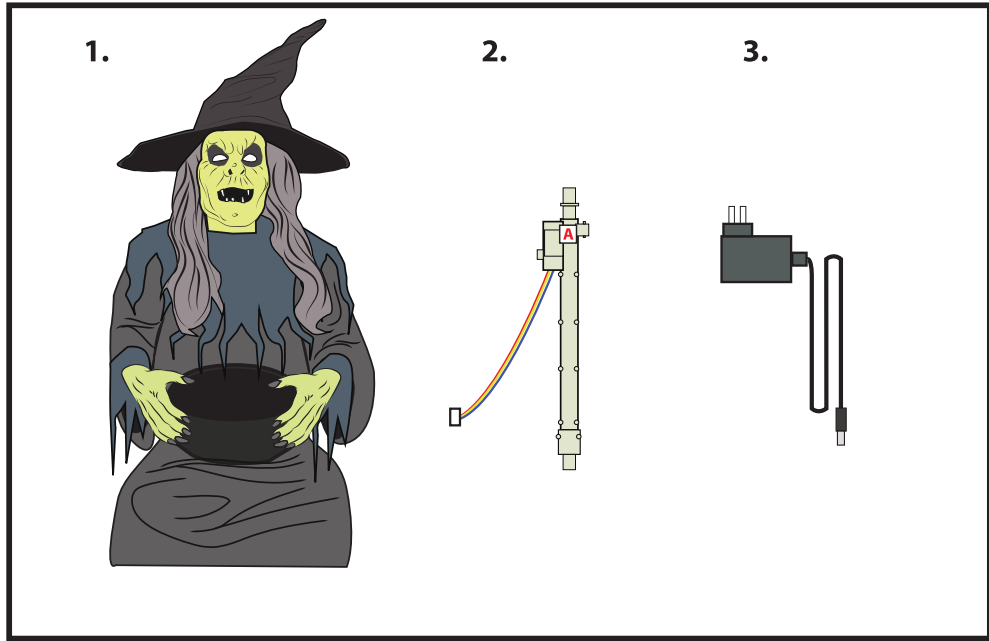


HAUNTING HARRIET

Installation and Operating Instructions

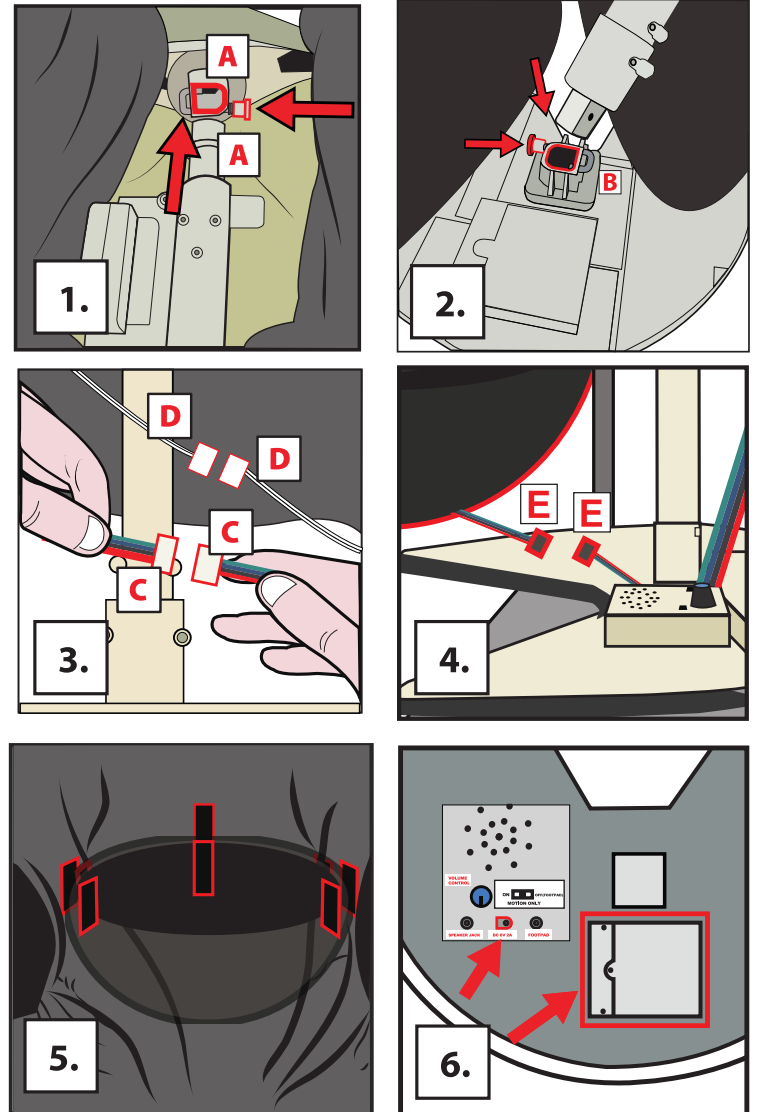
Keep all plastic and wire parts away from children.



PARTS

1. CLOTHES, HEAD, BASE, AND BOWL
2. MODULE
3. ADAPTER

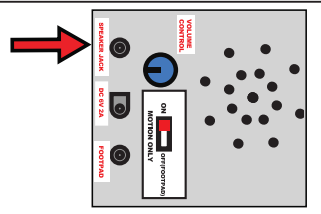
1. Locate the opening on the Witch's robe and push in circular locking pin below the neck. Insert the MODULE POLE into the base of the neck and release the locking pin to secure the MODULE. (Match A to A)
2. Push in the circular locking pin on the BASE and insert the module pole. (Match B to B) Release the locking pin to secure the MODULE.
3. Connect both sets of wires from the MODULE and BASE to wires located inside the Witch's robe. (Match C to C) and (Match D to D)
4. Connect wire running from the bowl to the wire running outside the Witch's robe. (Match E to E)
5. Attach three hook and loop fasteners on the Witch's lap to the three hook and loop fasteners to the bowl.
6. Reach into the back of the dress above the base, and Connect 6V2A ADAPTER (included) or insert 4 AA alkaline batteries into the battery compartment located on the BASE.
7. Reach into the back of the dress above the base, and turn the switch to the ON position to operate in Sound and Motion activation mode. Any sound or motion inside the candy bowl will activate the item. For MOTION ONLY, only motion inside the candy bowl will activate the item. Turn item OFF when not in use. Adjust volume control knob as needed.



OPTIONAL EXTERNAL SPEAKER SET UP

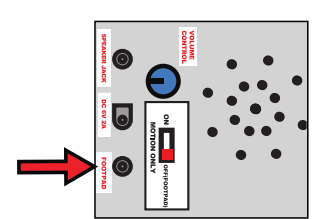
EXTERNAL SPEAKER IS NOT INCLUDED. MUST BE PURCHASED SEPARATELY.

1. Plug speaker cord into the jack labeled SPEAKER JACK located on top of the base.
2. Use volume knob on external speaker to control volume levels.

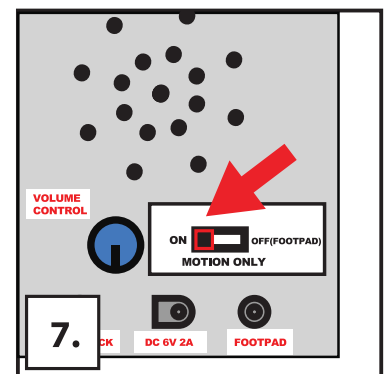


OPTIONAL FOOTPAD SET UP

1. Connect the cable from optional footpad.
2. Place the switch in the FOOTPAD position to enable FOOTPAD activation
3. Step on the FOOTPAD to activate the scary sequence!

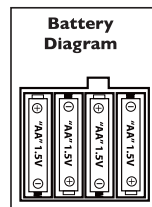


* Footpads, adapters and all other accessories are sold separately and can be purchased at www.tekkyaccessories.com



BATTERY INSTRUCTIONS AND CAUTIONS

Battery installation and removal should be performed by an adult. Remove batteries when not in use. Use only batteries recommended in the instructions. Do not mix new and used batteries. Do not mix alkaline, carbon-zinc, nickel-cadmium, rechargeable or different types of batteries. Be mindful to insert batteries with the correct polarity (+/-) as indicated. Remove all exhausted batteries. Rechargeable batteries are only to be charged under adult supervision. Rechargeable batteries are to be removed from the item before being charged. Non-rechargeable batteries are not to be recharged. The supply terminals are not to be short-circuited. Always dispose of exhausted batteries properly. Do NOT dispose of batteries in fire, they may leak or explode.



Warning! This item is not a toy. For decoration only. Small parts, choking hazard. This product is intended for use by persons 15 years of age and older. Not intended for use by children ages 14 years and younger.

WARNING
DO NOT TURN ITEM ON UNTIL YOU HAVE COMPLETELY FINISHED ASSEMBLY.
STAY CLEAR OF ITEM WHILE OPERATING.
DO NOT PLACE ITEM ON UNEVEN GROUND.
DO NOT PLACE WEIGHT ON ITEM WHILE IN OPERATION
** FOR INDOOR USE ONLY**



visit us at tekkydesign.com
Requires 6V 2A ADAPTER (included) or 4 AA batteries (not included)

ALL NEW MATERIALS:
METAL, FOAM, PLASTIC, POLYESTER
Surface washable only.

HAUNTING HARRIET™ is a trademark of Tekky Toys.
Copyright © 2018 Tekky Toys.
All Rights Reserved.
MADE IN CHINA



DO NOT RETURN THIS ITEM TO THE STORE!
If experiencing technical difficulties, please go to www.tekkydesign.com for assistance.