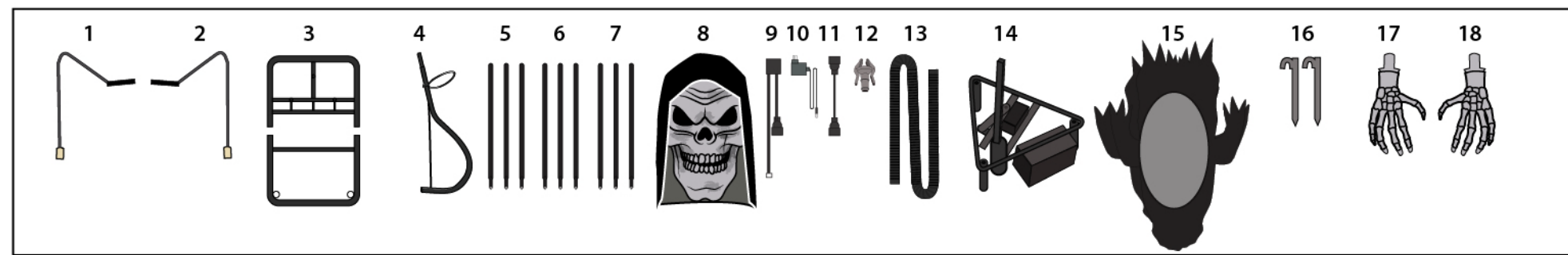


FOGGING GRIM REAPER™

Installation and Operating Instructions

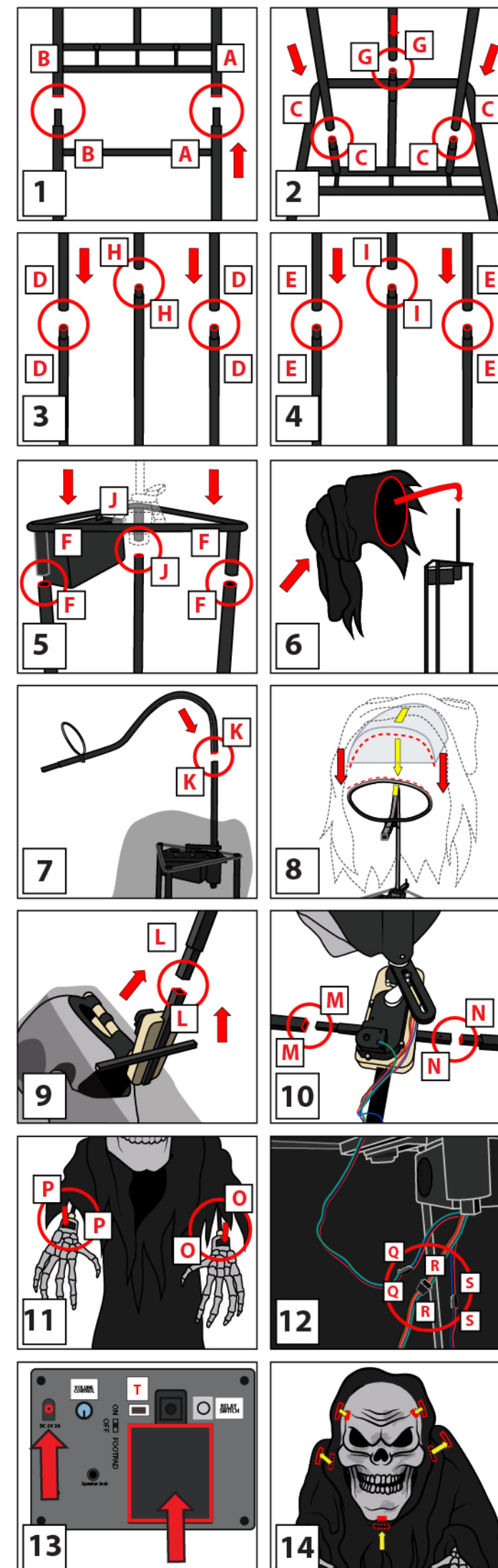
Keep all plastic and wire parts away from children.



PARTS

- | | | | | |
|----------------------|-------------------------|----------------------|----------------------------|----------------|
| 1. RIGHT ARM | 5. LOWER SUPPORT POLES | 9. FOG CORD | 13. FOG HOSE | 17. RIGHT HAND |
| 2. LEFT ARM | 6. MIDDLE SUPPORT POLES | 10. 6V 2A ADAPTER | 14. WAIST AND CONTROL BOX | 18. LEFT HAND |
| 3. METAL STAND QTY 2 | 7. UPPER SUPPORT POLES | 11. FOG CORD ADAPTER | 15. CLOAK AND PLASTIC BACK | |
| 4. UPPER SPINE POLE | 8. HEAD AND HOOD | 12. FOG BRACKET | 16. METAL STAKES | |

- Snap lock both halves of the METAL STAND together. (Match A to A) and (Match B to B)
- Snap Lock 3 LOWER SUPPORT POLES onto the assembled METAL STAND. (Match C to C) and (Match G to G)
- Snap Lock 3 MIDDLE SUPPORT POLES onto the LOWER SUPPORT POLES. (Match D to D) and (Match H to H)
- Snap Lock 3 UPPER SUPPORT POLES onto the MIDDLE SUPPORT POLES. (Match E to E) and (Match I to I)
- Snap lock the WAIST AND CONTROL BOX onto the UPPER SUPPORT POLES. (Match F to F) and (Match J to J)
- Place the CLOAK AND PLASTIC BACK over the WAIST AND CONTROL BOX.
- Snap Lock the UPPER SPINE POLE to the WAIST AND CONTROL BOX. (Match K to K)
- Secure the CLOAK WITH PLASTIC BACK over the UPPER SPINE POLE with hook and loop fastener and seat the PLASTIC BACK onto the large metal ring.
- Snap lock the HEAD AND HOOD to the UPPER SPINE POLE. (Match L to L)
- Insert the LEFT AND RIGHT ARMS through the sleeves of the CLOAK WITH PLASTIC BACK. Snap lock the LEFT AND RIGHT ARMS to the metal bracket behind the HEAD. (Connect M to M) and (Connect N to N)
- Snap lock both HANDS to the ends of the LEFT AND RIGHT ARMS. (Match O to O) and (Match P to P) Secure the hook and loop fastener on each sleeve to the hook and loop fasteners located on the back of both hands.
- Connect the wires located underneath the CLOAK AND PLASTIC BACK from the CONTROL BOX to the HEAD. (Connect Q to Q), (Connect R to R) and (Connect S to S)
- Reach inside the CLOAK AND PLASTIC BACK. Connect 6V 2A ADAPTER (included) or insert 4 AA alkaline batteries (not included) into the battery compartment located on the CONTROL BOX. Turn the switch to the ON position to activate the item. Move in front of the item to activate. Turn item OFF when not in use.
NOTE: A PIR sensor detects the human infrared signature and must be uncovered and facing forward to trigger this item. In order for the FOGGING GRIM REAPER to function optimally, make sure the PIR sensor located on the front of the HEAD is not blocked or obstructed in any way.
- Attach the 3 hook and loop fasteners located on the HOOD to the HEAD. Fasteners are located on the chin and sides of the HEAD. Attach the two hook and loop fasteners located on the hood to fasteners located on the CLOAK. Proceed to the FOG SET UP to continue assembly and operation.



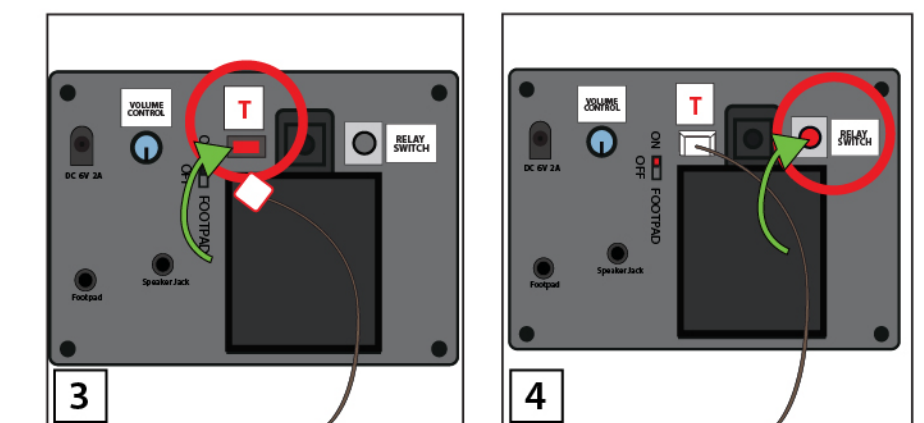
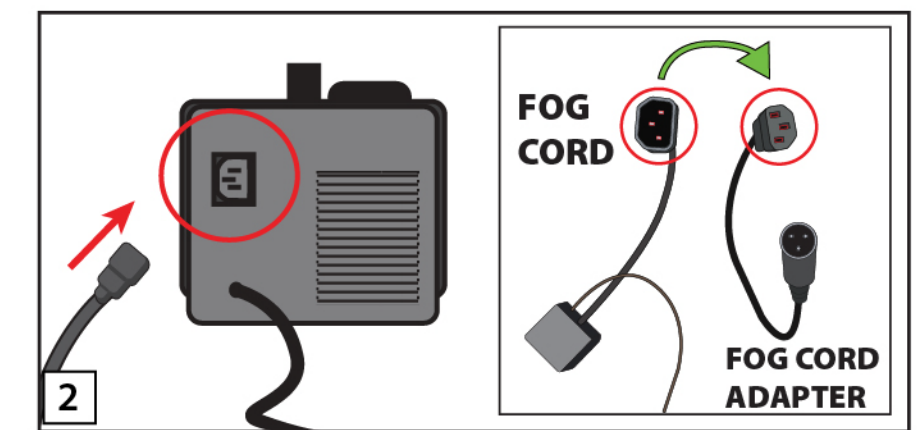
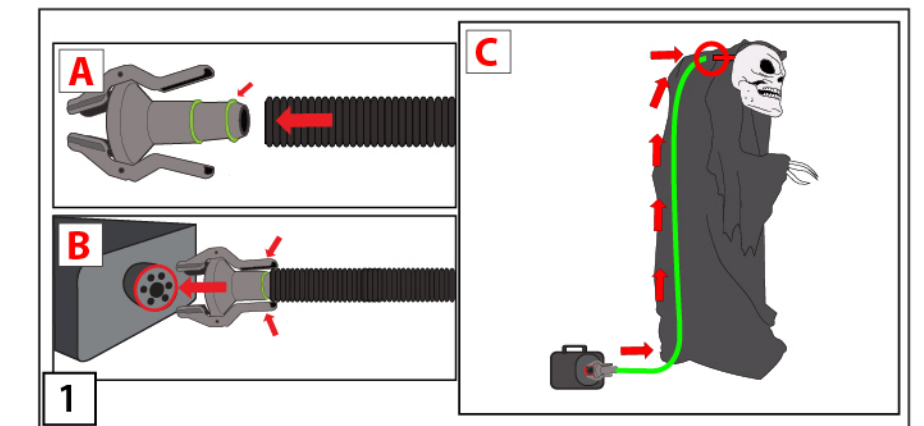
FOG MACHINE SETUP

Your FOG MACHINE (400 or 1000 watt) can be used in conjunction with THE FOGGING GRIM REAPER.

FOG MACHINE IS NOT INCLUDED. MUST BE PURCHASED SEPARATELY.

ONLY ATTACH A FOG MACHINE AS INSTRUCTED BELOW. ** MAKE SURE THE FOGGING GRIM REAPER IS SET TO THE "OFF" POSITION AND YOUR FOG MACHINE IS TURNED OFF**

- Slide FOG TUBE over the FOG BRACKET as seen in illustration A. The fog hose will click in place over the raised surface of the FOG BRACKET. (see illustration A)
- Depress the lever arms of the FOG BRACKET and attach to the fog machine nozzle. (see illustration B)
- Run the FOG HOSE under the clothing and attach to the back of the HEAD. (see illustration C)



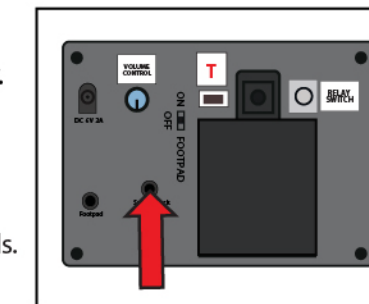
- Plug the FOG CORD into your fog machine. If the fog cord plug does not fit, see illustration 2A.
- Plug the FOG CORD into the FOG CORD ADAPTER. Plug the FOG CORD ADAPTER into your fog machine.
- Plug the other end of the FOG CORD into the jack labeled T on the CONTROL BOX. (Match T to T)
- Make sure your fog machine is heated up properly, turn your fog machine ON, and then turn FOGGING GRIM REAPER'S switch to the "ON" position. Move in front of the item. If no fog appears, press the relay switch on the CONTROL BOX.

WARNING
Only for use with 400 watt (preferably) or 1000 watt fog machines. Do not use with any other fog machine. Manufacturer does not guarantee the performance of the fog machine. Make sure to use the supplied fog machine components when hooking up to the fog machine, or damage could occur.

OPTIONAL EXTERNAL SPEAKER SET UP

EXTERNAL SPEAKER IS NOT INCLUDED. MUST BE PURCHASED SEPARATELY.

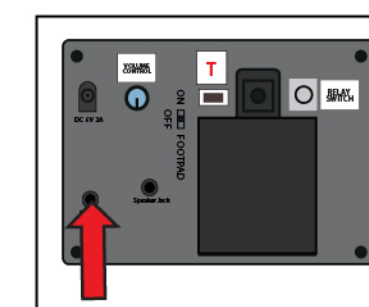
- Plug speaker cord into the jack labeled SPEAKER JACK located on side of the control box.
- Use volume knob on external speaker to control volume levels.



OPTIONAL FOOTPAD SET UP

FOOTPAD IS NOT INCLUDED. MUST BE PURCHASED SEPARATELY.

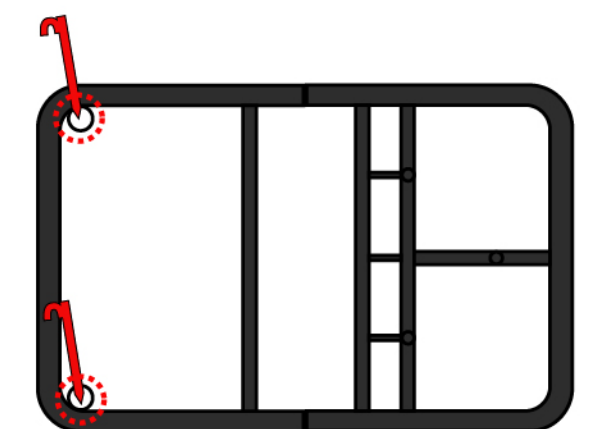
- Insert the cable from optional footpad into the jack labeled FOOTPAD on the control box.
- Place the switch in the FOOTPAD position to enable FOOTPAD activation.
- Step on the FOOTPAD to activate the scary sequence!



* Footpads and adapters are sold separately and can be purchased at www.tekkyaccessories.com

OPTIONAL SHELTERED OUTDOOR GROUND STAKES SETUP

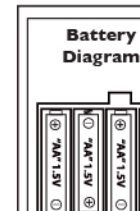
For additional sheltered outdoor stability, hammer the METAL STAKES through the metal loops located on the METAL STAND to secure.



visit us at tekkydesign.com
Requires 6V 2A ADAPTER (included) or 4AA batteries (not included)

ALL NEW MATERIALS:
METAL, FOAM, PLASTIC, POLYESTER
Surface washable only.

FOGGING GRIM REAPER™ is a trademark of Tekky.
Copyright © 2021 Tekky.
All Rights Reserved.
MADE IN CHINA



BATTERY INSTRUCTIONS AND CAUTIONS
Battery installation and removal should be performed by an adult. Remove batteries when not in use. Use only batteries recommended in the instructions. Do not mix new and used batteries. Do not mix alkaline, carbon-zinc, nickel-cadmium, rechargeable or different types of batteries. Be mindful to insert batteries with the correct polarity (+/-) as indicated. Remove all exhausted batteries. Rechargeable batteries are only to be charged under adult supervision. Rechargeable batteries are to be removed from the item before being charged. Non-rechargeable batteries are not to be recharged. This supply terminals are not to be short-circuited. Always dispose of exhausted batteries properly. Do NOT dispose of batteries in fire, they may leak or explode.

Warning! This item is not a toy. For decoration only. Small parts, choking hazard. This product is intended for use by persons 15 years of age and older. Not intended for use by children ages 14 years and younger.

WARNING
DO NOT TURN ITEM ON UNTIL YOU HAVE COMPLETELY FINISHED ASSEMBLY. STAY CLEAR OF ITEM WHILE OPERATING. DO NOT PLACE ITEM ON UNEVEN GROUND. DO NOT PLACE WEIGHT ON ITEM WHILE IN OPERATION.



DO NOT RETURN THIS ITEM TO THE STORE!
If experiencing technical difficulties, please go to tekkydesign.com for assistance.



SMART PHONE SCAN
SETUP VIDEO

