

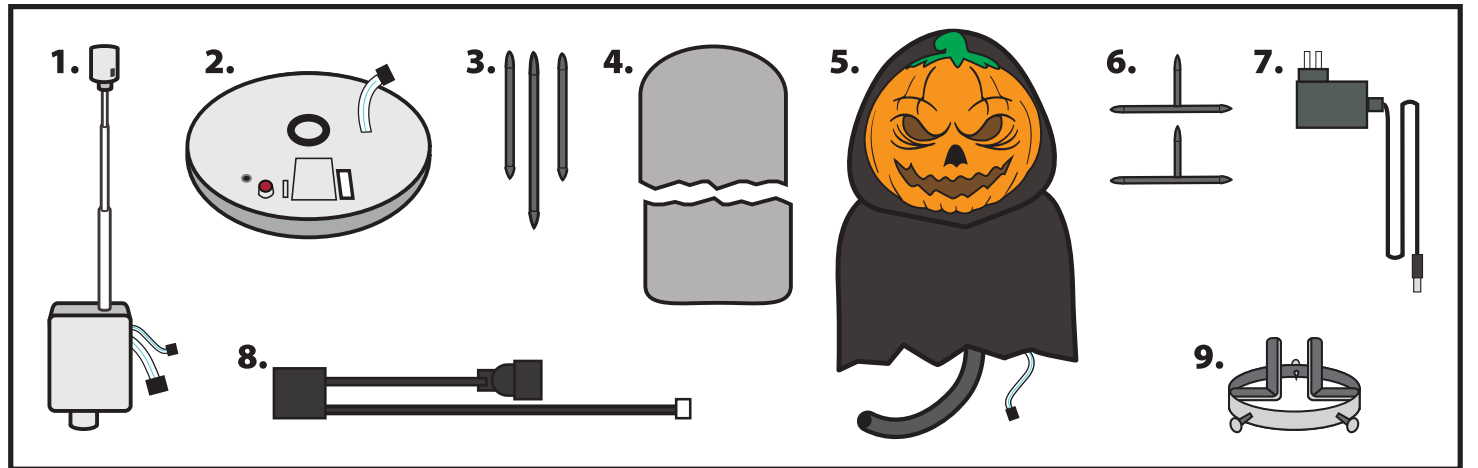
PUMPKIN GUARDIAN OF THE GRAVE™

INSTALLATION AND OPERATING INSTRUCTIONS

KEEP ALL PLASTIC AND WIRE PARTS AWAY FROM CHILDREN

PARTS:

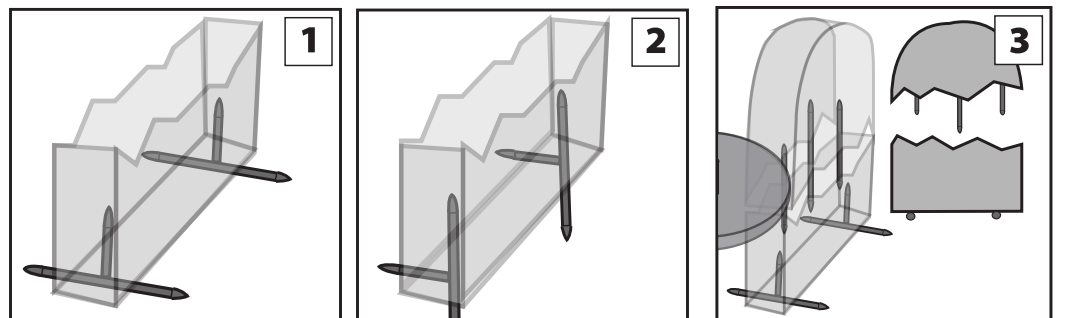
1. TELESCOPING MODULE
2. BASE
3. TOMBSTONE SPIKES (3)
4. TOMBSTONE (2 HALVES)
5. HEAD AND CLOTHING
6. TOMBSTONE FOOT SPIKES (2)
7. ADAPTER
8. FOG CORD
9. METAL FOG BRACKET



TOMBSTONE ASSEMBLY

1. Insert 2 **TOMBSTONE FOOT SPIKES** into the bottom of the bottom half of **TOMBSTONE**.

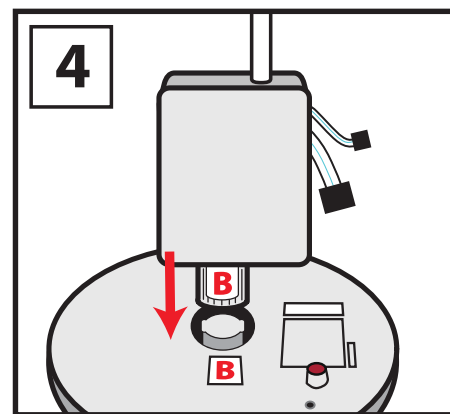
Note: For indoor use, insert **TOMBSTONE FOOT SPIKES** as seen in illustration 1. For sheltered outdoor use, see Illustration 2. Use caution when inserting the plastic spikes into the ground, as they may break easily. We recommend puncturing a hole into the ground **BEFORE** inserting plastic spikes. Use a screwdriver or similar tool to puncture ground.



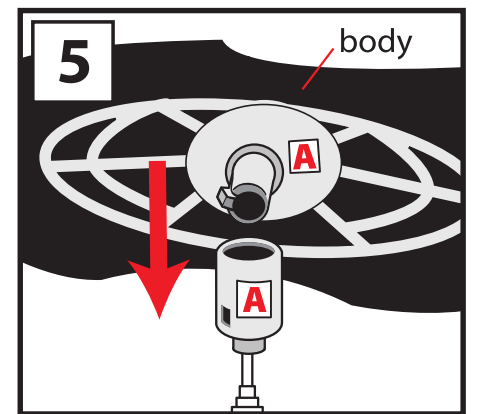
2. Insert 3 **TOMBSTONE SPIKES** into pre made holes in top half of **TOMBSTONE**, placing the long spike in the center, and attach top half of **TOMBSTONE** to bottom half of **TOMBSTONE**. See illustration 3.

3. Place **BASE** 3 inches in back of **TOMBSTONE**.

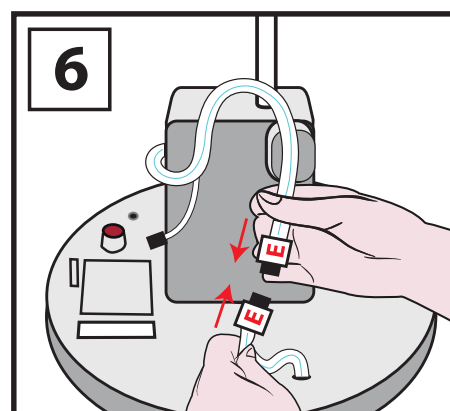
4. Insert **TELESCOPING MODULE** into **BASE**, (Match **B** to **B**) . Twist to lock in place.



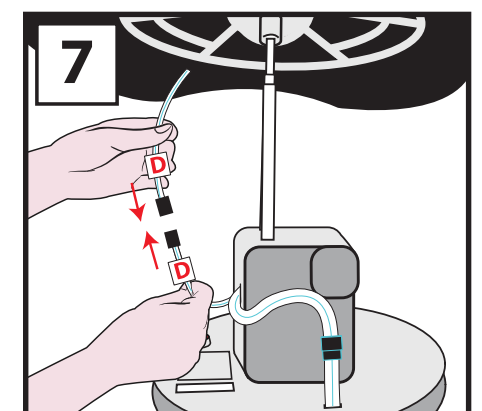
5. Lift fabric over Pumpkin's head and snap lock **HEAD AND CLOTHING** into **TELESCOPING MODULE** (Match **A** to **A**).



6. Insert wire from **TELESCOPING MODULE** into wire coming from **BASE**. (Match **E** to **E**)

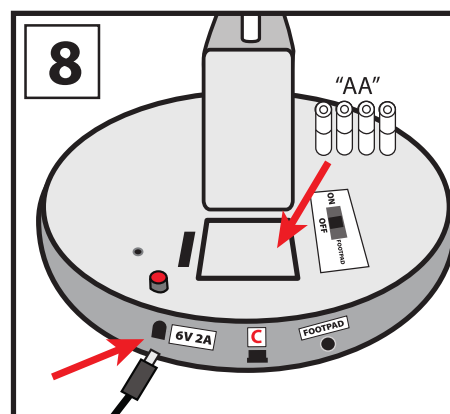


7. Insert wire from underneath clothing into wire coming from **TELESCOPING MODULE**. (Match **D** to **D**)



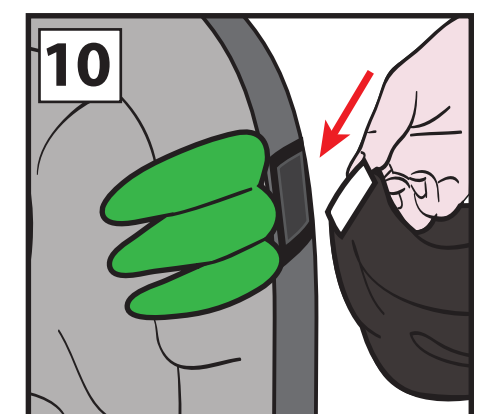
8. Connect **ADAPTER**, or insert 4 AA alkaline batteries (not included) into the battery compartment located on the **BASE**.

Note: Turn the switch to the **ON** position to operate in Sound activation mode. Make a loud sound (clap), to activate. Turn item **OFF** when not in use..



9. Adjust **VOLUME CONTROL** knob located on the **BASE** as needed.

10. Attach hook and loop fasteners located on the Pumpkin Guardian's sleeves to the hook and loop fasteners on the sides of **TOMBSTONE**.

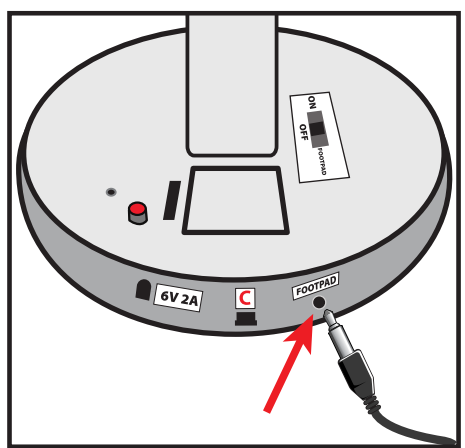


Optional Footpad Setup

Follow steps #1 through #8 on initial installation first.

1. Connect the cable from the optional footpad to the jack labeled **FOOTPAD** located on the base.
2. Turn the switch on the base to the 'FOOTPAD' position to enable FOOTPAD activation.
3. Step on FOOTPAD to activate the scary sequence. (go to instruction #9 to continue setup)

*Footpads are sold separately and can be purchased at www.tekkytoys.com



SMART PHONE SCAN SETUP VIDEO



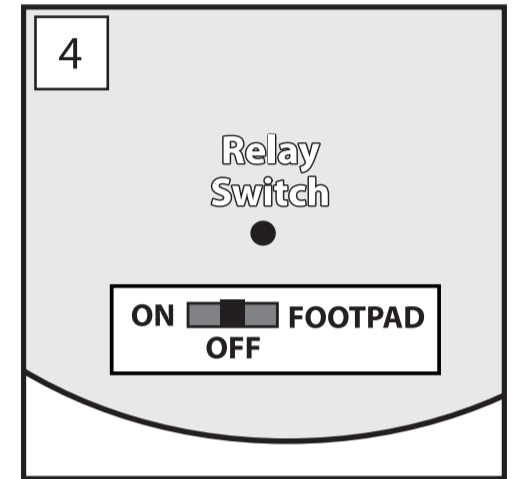
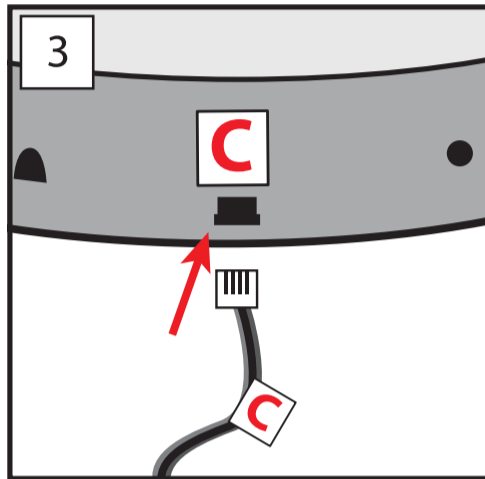
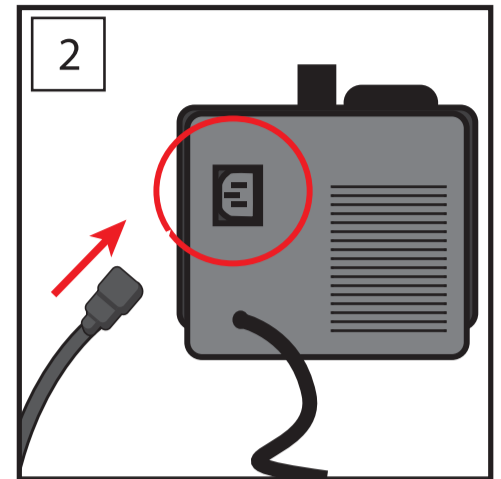
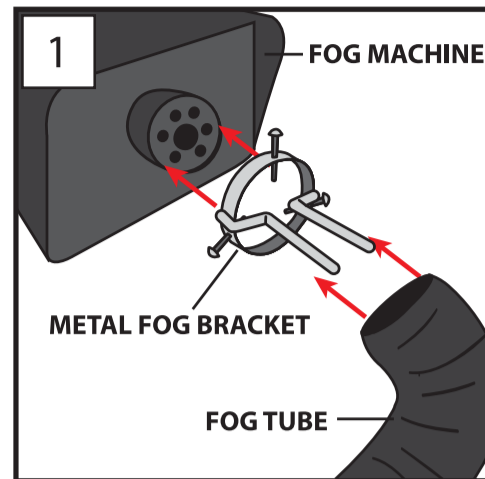
Optional Fog machine Setup Instructions

Your FOG MACHINE (select models) can be used in conjunction with the Pumpkin Guardian.
FOG MACHINE IS NOT INCLUDED. MUST BE PURCHASED SEPARATELY.

ONLY ATTACH A FOG MACHINE AS INSTRUCTED BELOW.

****MAKE SURE PUMPKIN GUARDIAN IS SET TO THE "OFF" POSITION AND YOUR FOG MACHINE IS NOT TURNED ON****

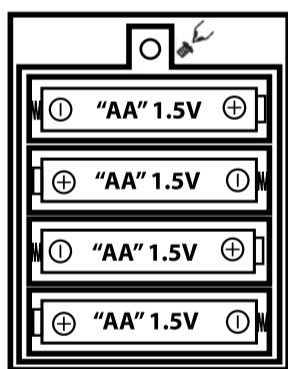
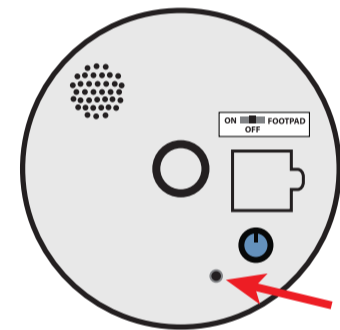
1. Attach **METAL FOG BRACKET** to your fog machine as shown in illustration 1.
Note: Leave about 1.5 inch space between fog machine nozzle and the end of the tubing, or tube may melt.
2. Plug the Pumpkin Guardian's **FOG CORD** into your fog machine. If **FOG CORD** will not plug in, or your machine does not interface with Pumpkin Guardian, we recommend that you not use the optional fog attachment.
3. Plug the other end of **FOG CORD** into the **BASE**.
(Match C to C)
4. Make sure your fog machine is heated up properly, then turn Pumpkin Guardian's switch to the "ON" position. If fog does not appear from the mouth, try pressing the relay switch on the **BASE**.



Optional External Speaker Setup Instructions

EXTERNAL SPEAKER IS NOT INCLUDED. MUST BE PURCHASED SEPARATELY.

1. Plug speaker cord into the jack labeled **SPEAKER JACK** located on top of the **BASE**.
2. Use volume knob on external speaker to control volume levels.



BATTERY INSTRUCTIONS AND CAUTIONS:

- Use only the batteries recommended.
- Remove batteries when not in use.
- Do NOT use rechargeable batteries.
- Be sure to insert the batteries with the correct polarity +/-.
- Never mix different types of batteries: old and new, carbon-zinc, alkaline, nickel-cadmium.
- Always dispose of exhausted batteries properly.

ADULT SUPERVISION IS RECOMMENDED WHEN CHANGING BATTERIES.

Outdoor Warnings:

For best overall performance, we recommend you operate your item in a sheltered outdoor area. We also recommend you bring your item indoors during adverse weather conditions (extreme cold, strong winds and/or rain). This item operates best outdoors in temperatures above freezing (32°F).

Tekky Toys recommends using heavy-duty, alkaline batteries for best operating performance.



TEKKY

visit us at tekkytoys.com

Requires 4 'AA' Batteries (not included)
 DC Adapter Ready 6V 2A (included)

ALL NEW MATERIALS:
 PLASTIC, WIRE, POLYESTER FIBRES,
 POLYSTYRENE FOAM, POLYURETHANE FOAM
Surface washable only.

PUMPKIN GUARDIAN OF THE GRAVE is a trademark of Tekky Toys.
 Copyright © 2015 Tekky Toys.
 All Rights Reserved.
 MADE IN CHINA

Warning! This item is not a toy. For decoration only. Small parts, choking hazard.
 This product is intended for use by persons 15 years of age and older.
 Not intended for use by children ages 14 years and younger.

WARNING
DO NOT TURN ITEM ON UNTIL YOU HAVE COMPLETELY FINISHED ASSEMBLY.
STAY CLEAR OF ITEM WHILE OPERATING.
DO NOT PLACE ITEM ON UNEVEN GROUND.
DO NOT PLACE WEIGHT ON ITEM WHILE IN OPERATION
**** FOR INDOOR USE ONLY****



DO NOT RETURN THIS ITEM TO THE STORE!
 If experiencing technical difficulties, please go
 to www.tekkytoys.com for assistance.