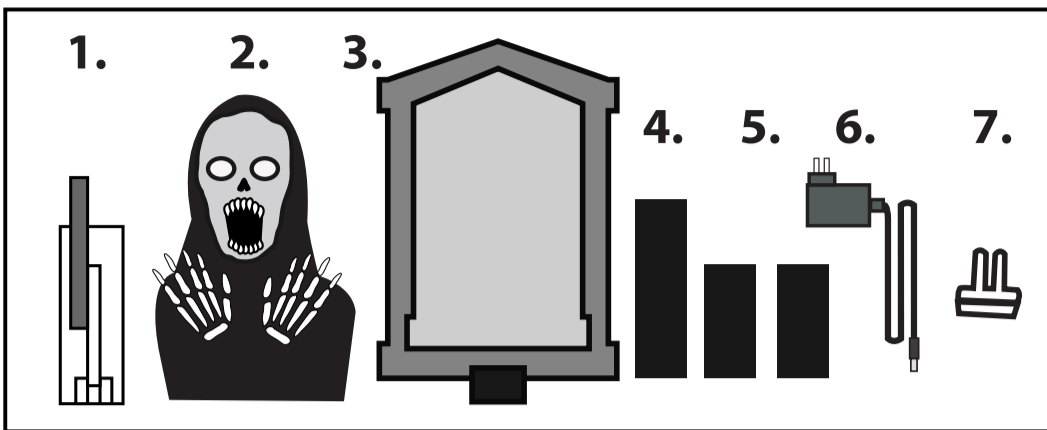


JUMPING SKULL

INSTALLATION AND OPERATING INSTRUCTIONS

KEEP ALL PLASTIC AND WIRE PARTS AWAY FROM CHILDREN



PARTS

1. JUMPING MODULE
2. SKULL WITH UPPER BODY
3. FRONT FOOT WITH TOMBSTONE
4. BACK FOOT
5. SIDE FEET
6. ADAPTER
7. FOOT REMOVAL KEY

1. Insert **SIDE FEET** into bottom of **MODULE** until they lock into place. **(Match A to A)**

* **Note:** Press to make sure each **FOOT** is flush with rectangular base. To remove **FOOT**, insert plastic "KEY" (included) into holes on bottom to release locks, twist and pull.

2. Insert **BACK FOOT** into bottom of **MODULE** until it locks into place. **(Match B to B)**

* **Note:** When needed add weight or tape down feet to increase stability.

3. Lift **MODULE** poles until they are vertical and attach springs as shown.

4. Insert **FRONT FOOT WITH TOMBSTONE** into bottom of **MODULE** until it locks into place. **(Match C to C)**

5. Snap lock pole from **FRONT FOOT WITH TOMBSTONE** to **MODULE**.

6. Attach **SKULL WITH UPPER BODY** to **MODULE**.

* **REMOVAL:** Push lever forward and lift up on **SKULL AND UPPER BODY** to remove.

7. Connect wire located inside clothing. **(Match D to D)**

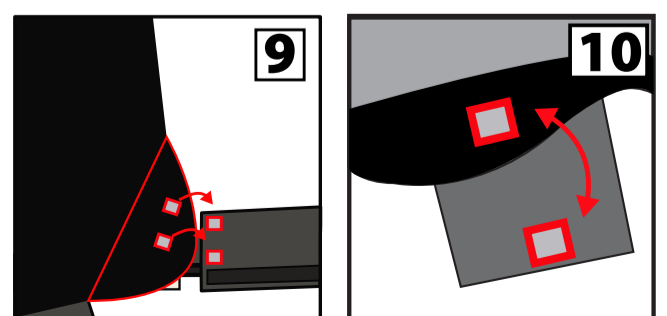
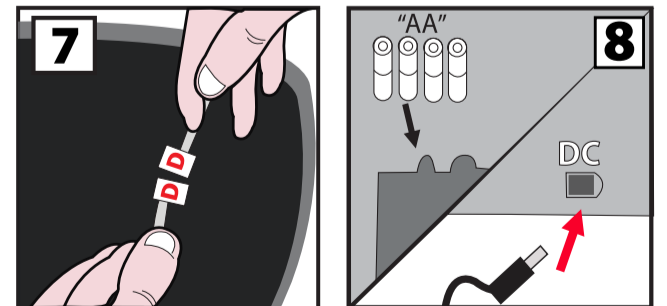
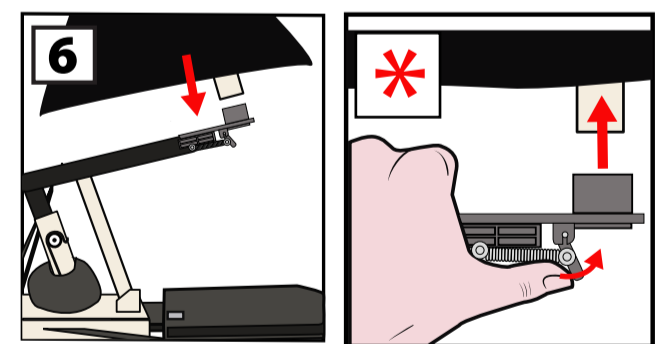
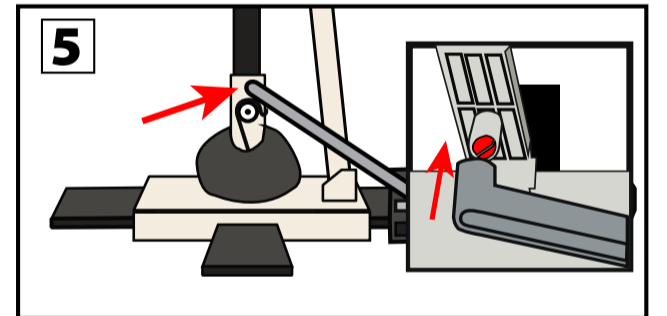
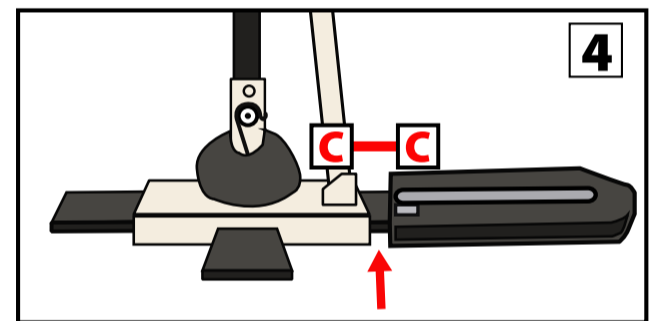
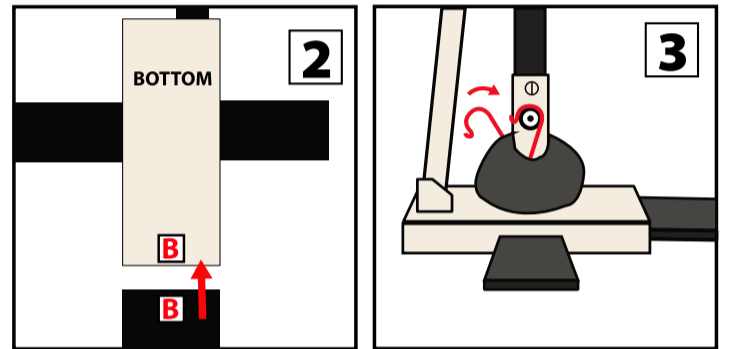
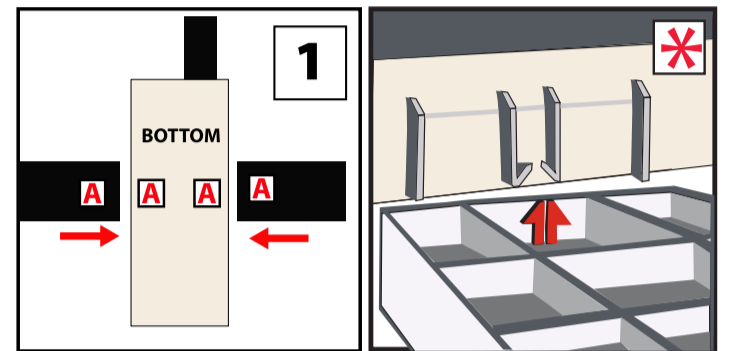
8. Connect 6V2A **ADAPTER** or insert 4 AA alkaline batteries into the battery compartment located on the top of the **MODULE**.

Note: Turn switch on top of **MODULE** to ON to operate in Sound activation mode. Make a loud sound (clap) to activate. Leave switch in OFF position when not in use.

9. Attach hook and loop on the inside front fabric to the hook and loop located on the back of the **TOMBSTONE**.

10. Attach hook and loop on the fabric to the opposite hook and loop located on **BACK** and **SIDE FEET**.

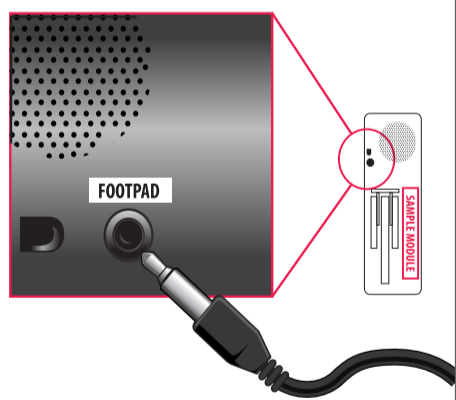
11. Adjust sound with **VOLUME CONTROL KNOB** located on the **MODULE** as needed.



Optional Footpad Setup

Follow steps #1 through 8 on initial installation first.

1. Connect the cable from the optional footpad to the jack labeled FOOTPAD located on the MODULE.
2. Place the switch on the MODULE into the 'FOOTPAD' position to enable FOOTPAD activation.
3. Step on FOOTPAD to activate the scary sequence. (go to instruction #9 to continue setup)



*Footpads are sold separately and can be purchased at www.tekkytoys.com

SMART PHONE SCAN SETUP VIDEO



VISIT US AT TEKKYTOYS.COM

Requires 4 'AA' Batteries(not included) or optional 6V 2A Adapter. (included)

Surface washable only.

ALL NEW MATERIALS:
PLASTIC, POLYESTER,
POLYESTER FIBER

JUMPING SKULL
is a trademark of Tekky Toys.
Copyright © 2014 Tekky Toys.
All Rights Reserved.
Made in China
PATENT 8,602,836

WARNING

DO NOT TURN ITEM ON UNTIL YOU HAVE COMPLETELY FINISHED ASSEMBLY.
STAY CLEAR OF ITEM WHILE OPERATING.
DO NOT PLACE ITEM ON UNEVEN GROUND.
DO NOT PLACE WEIGHT ON ITEM WHILE IN OPERATION



DO NOT RETURN THIS ITEM TO THE STORE!
If experiencing technical difficulties, please go to www.tekkytoys.com for assistance.

Tekky Toys Hours of Operation: Monday - Friday 9am to 5pm CST

T: 708-478-8424 E: support@tekkytoys.com

visit us: tekkytoys.com