

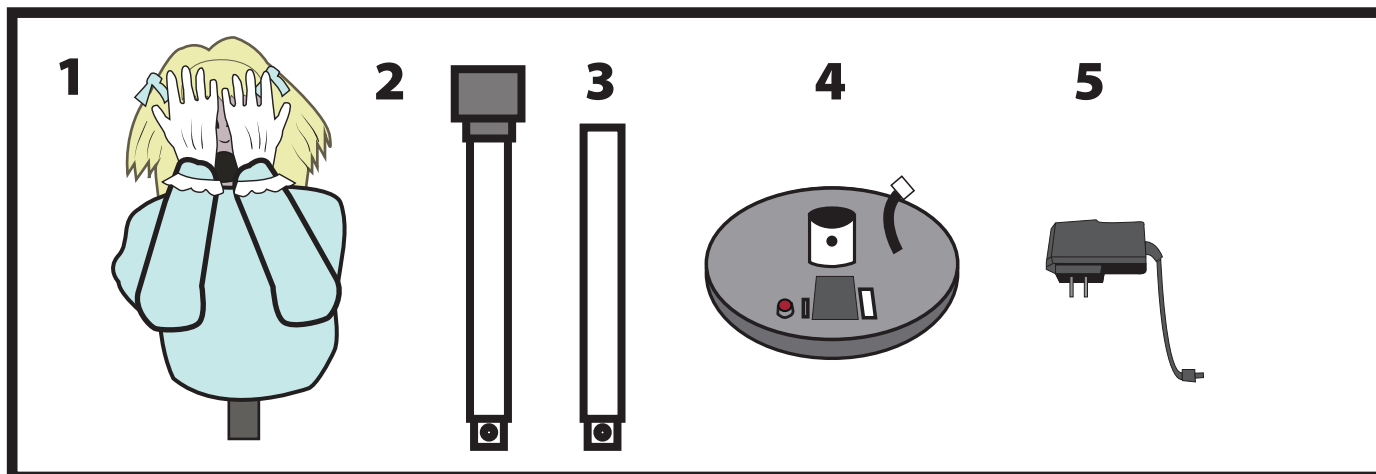
# PEEK A BOO PENNY

## INSTALLATION AND OPERATING INSTRUCTIONS

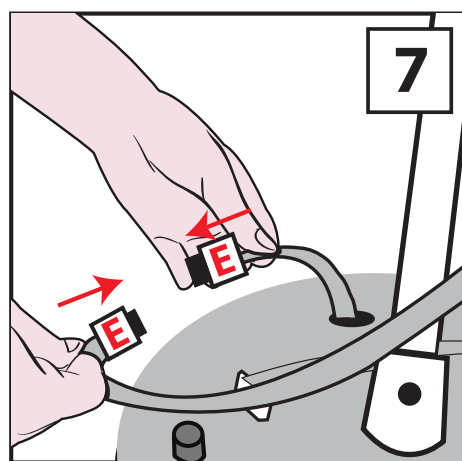
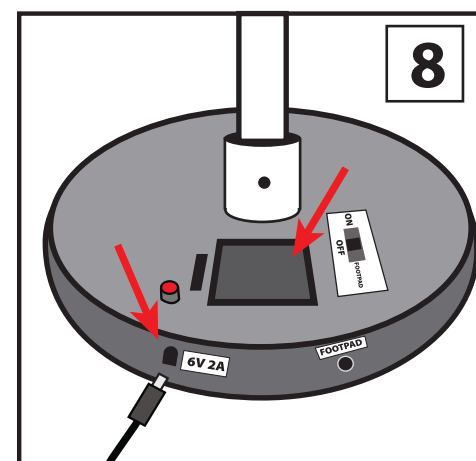
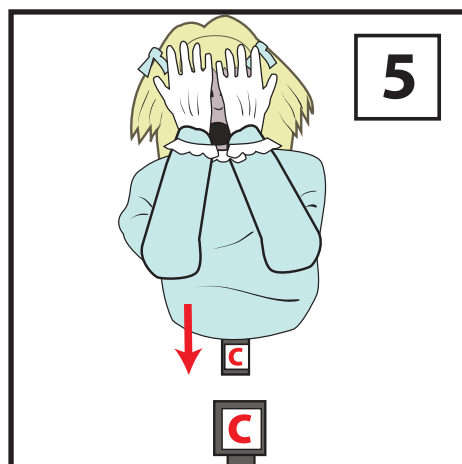
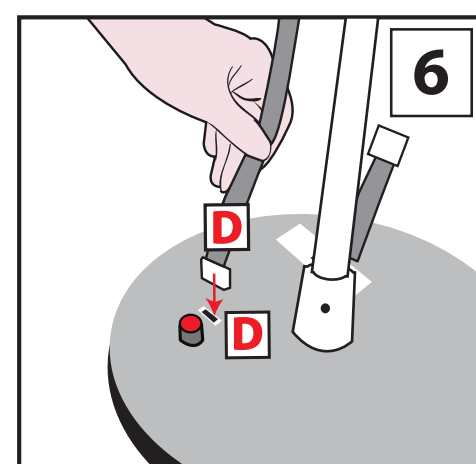
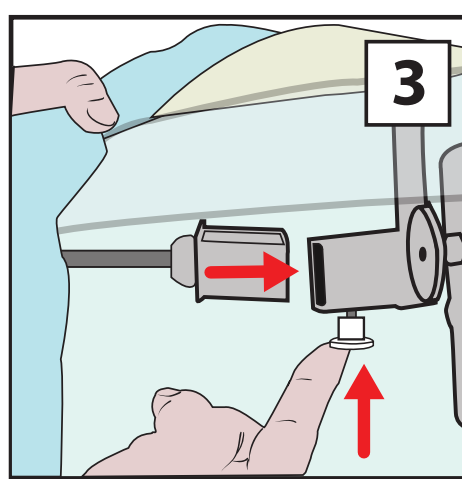
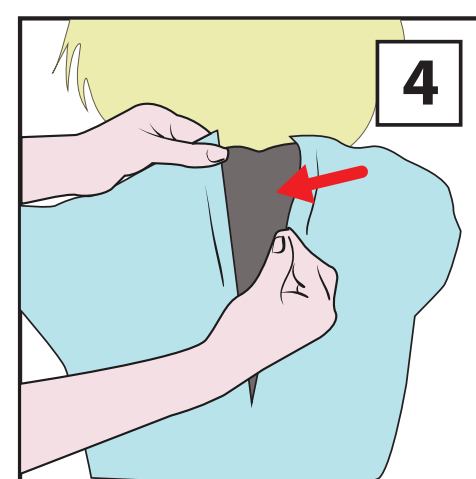
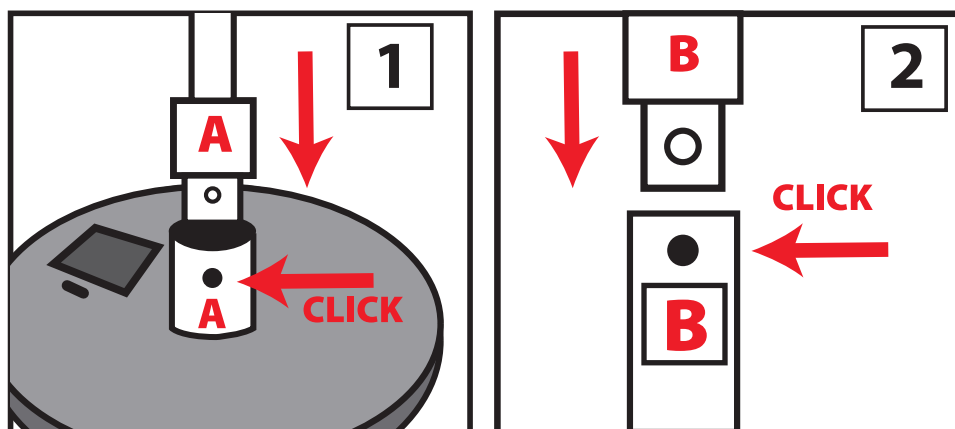
KEEP ALL PLASTIC AND WIRE PARTS AWAY FROM CHILDREN

### PARTS

1. BODY AND POLE
2. CENTER POLE
3. BOTTOM POLE
4. BASE
5. ADAPTER



1. Insert **BOTTOM POLE** into **BASE**. Pole is secure when snap lock pin clicks into post on base. (Match A to A)
2. Insert **CENTER POLE** into **BOTTOM POLE**. Pole is secure when snap lock pin clicks into post on base. (Match B to B)
3. Open hook and loop on the back of the **BODY AND POLE**. Push the circular locking pin upward and attach arm into shoulder. Release locking pin when arm is firmly connected. **REPEAT STEP FOR OTHER ARM.**
4. Close hook and loop located on dress on the back side of the **BODY AND POLE**.
5. Insert **BODY AND POLE** into **CENTER POLE**. (Match C to C)
6. Insert wire from underneath clothing into **BASE**. (Match D to D)
7. Insert wire from underneath clothing into wire coming from **BASE**. (Match E to E)
8. Connect **ADAPTER**, or insert 4 AA alkaline batteries (not included) into the battery compartment located on the **BASE**.  
**Note:** Turn the switch to the **ON** position to operate in Sound or Motion activation mode. Make a loud sound (clap), or move in front of the item to activate. Turn the switch to **MOTION** to operate in Motion activation only. Turn item **OFF** when not in use.
9. Attach hook and loop located underneath the dress to both sides of the **BASE**.
10. Adjust **VOLUME CONTROL** knob located on the **BASE** as needed.

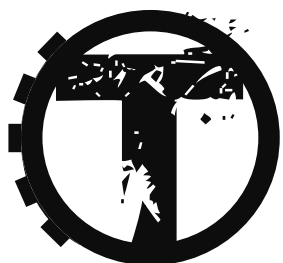
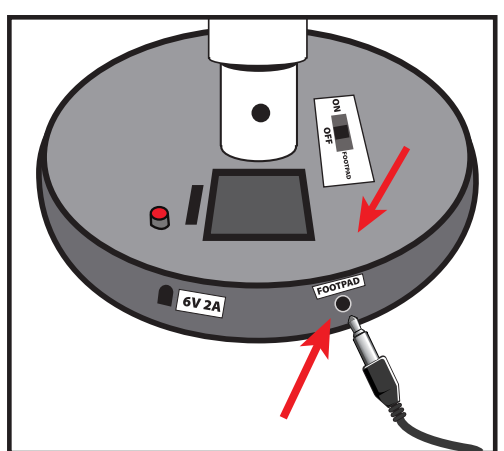


### Optional Footpad Setup

Follow steps #1 through #8 on initial installation first.

1. Connect the cable from the optional footpad to the jack labeled FOOTPAD located on the base.
2. Turn the switch on the base to the 'FOOTPAD' position to enable FOOTPAD activation.
3. Step on FOOTPAD to activate the scary sequence. (go to instruction #9 to continue setup)

\*Footpads are sold separately and can be purchased at [www.tekkytoys.com](http://www.tekkytoys.com)



TEKKY

VISIT US AT [TEKKYTOYS.COM](http://TEKKYTOYS.COM)

Surface Washable Only.  
ALL NEW MATERIALS : PLASTIC,  
POLYESTER, POLYESTER FIBER

Battery Powered:  
Requires 4 AA Batteries (not included)  
Optional DC Adapter Ready  
(6V 2A)  
Peek A Boo Penny is a trademark  
of Tekky Toys.  
Copyright © 2014 Tekky Toys.  
All Rights Reserved.  
MADE IN CHINA

### SMART PHONE SCAN SETUP VIDEO



**DO NOT RETURN THIS ITEM TO THE STORE!**  
If experiencing technical difficulties, please go to  
[www.tekkytoys.com](http://www.tekkytoys.com) for assistance.

**WARNING**  
DO NOT TURN ITEM ON UNTIL YOU HAVE COMPLETELY FINISHED ASSEMBLY.  
STAY CLEAR OF ITEM WHILE OPERATING.  
DO NOT PLACE ITEM ON UNEVEN SURFACE.  
DO NOT PLACE WEIGHT ON ITEM WHILE IN OPERATION

Tekky Toys Hours of Operation: Monday - Friday 9am to 5pm CST  
T: 708-478-8424 E: [support@tekkytoys.com](mailto:support@tekkytoys.com)  
visit us: [tekkytoys.com](http://tekkytoys.com)

