



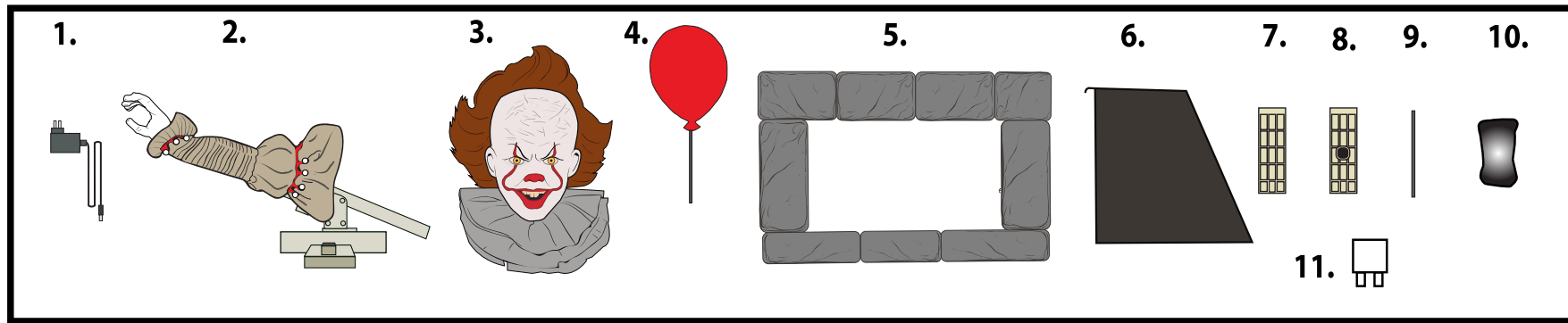
CHAPTER TWO™

IT CHAPTER 2 and all related characters and elements © &™ WBEI (s19)

SEWER GRABBER

INSTALLATION AND OPERATING INSTRUCTIONS

KEEP ALL PLASTIC AND WIRE PARTS AWAY FROM CHILDREN

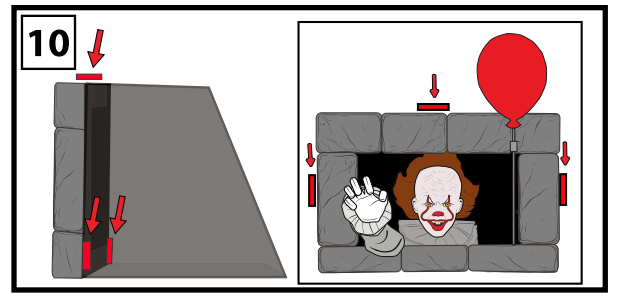
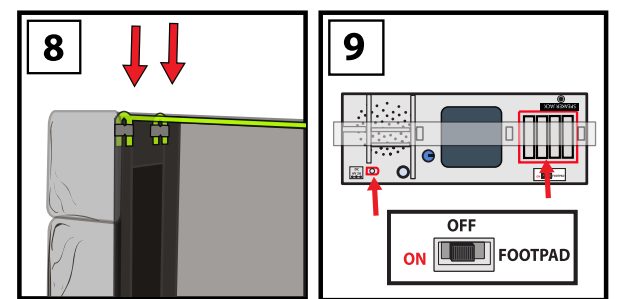
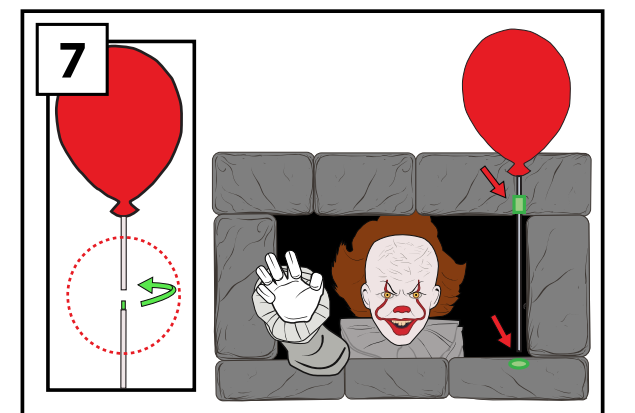
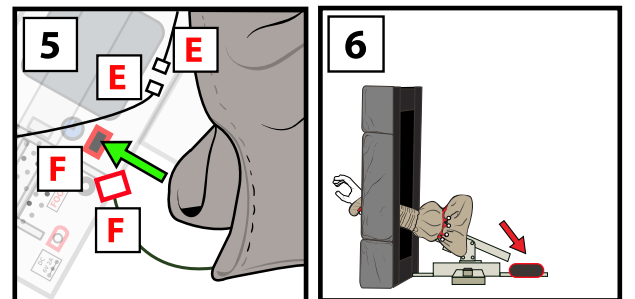
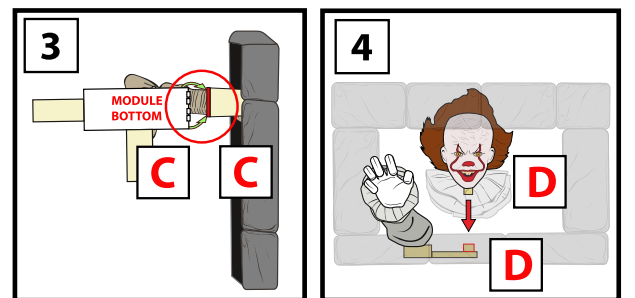
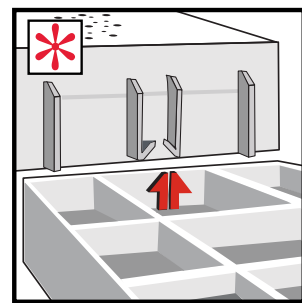
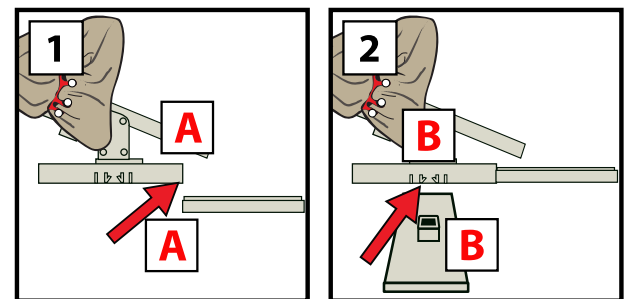


1. 6V 2A ADAPTER
2. MODULE AND ARM
3. HEAD
4. BALLOON
5. SEWER FRAME
6. TENT
7. BACK FOOT
8. SIDE FOOT
9. BALLOON POLE
10. SANDBAG
11. REMOVAL KEY

1. Attach BACK FOOT to MODULE AND ARM. (Match A to A)
2. Attach SIDE FOOT to the MODULE AND ARM. (Match B to B)

***NOTE:** Press to make sure the FEET are flush with the MODULE AND ARM. To remove FEET insert plastic FOOT REMOVAL KEY into holes on the bottom of the FEET to release locks. Gently twist and pull.
3. Turn the SEWER FRAME on it's side. Snap lock the MODULE AND ARM to the plastic foot located on the back of the SEWER FRAME. (Match C to C)
4. Place the SEWER FRAME flat on the ground and snap lock the HEAD onto the side foot located on the MODULE AND ARM. (Match D to D)
5. Connect wires located on MODULE AND ARM to the wires from the HEAD and SEWER FRAME. (Match E to E) and (Match F to F)
6. Place the SANDBAG on the BACK FOOT of the MODULE WITH ARM.
7. Twist the BALLOON POLE clockwise into the BALLOON. Tighten securely. Insert the BALLOON POLE through the top loop of the SEWER FRAME and secure the bottom of the BALLOON POLE into the hole located on the SEWER FRAME.
8. Unfold the tent and insert the metal ends of the TENT frame into the top of the SEWER FRAME. Make sure prongs of metal frame extend through bottom holes.
9. Insert 4 AA batteries (not included) into the battery compartment located on the top of the MODULE AND ARM or insert 6V 2A ADAPTER (included) into the MODULE.

***NOTE:** Turn switch to the ON position to operate in Sound or Motion activation mode. Make a loud sound (clap), or move in front of the item to activate. Turn item OFF when not in use.
10. Attach hook and loop fasteners on the top and sides of the SEWER FRAME.



OPTIONAL FOOTPAD SETUP
Follow steps #1 through #7 on initial installation first.

1. Connect the cable from the optional footpad to the jack labeled FOOTPAD located on the base.
2. Place the switch on the base into the 'FOOTPAD' position to enable FOOTPAD activation.
3. Step on FOOTPAD to activate the scary sequence. (go to instruction #8 to continue setup)

OPTIONAL EXTERNAL SPEAKER SET UP
EXTERNAL SPEAKER IS NOT INCLUDED. MUST BE PURCHASED SEPARATELY.
Follow steps #1 through 7 on initial installation first.

1. Plug speaker cord into the jack labeled SPEAKER JACK located on top of the base.
2. Use volume knob on external speaker to control volume levels. (go to instruction #8 to continue setup)

BATTERY INSTRUCTIONS AND CAUTIONS
Battery installation and removal should be performed by an adult. Remove batteries when not in use. Use only batteries recommended in the instructions. Do not mix new and used batteries. Do not mix alkaline, carbon-zinc, nickel-cadmium, rechargeable or different types of batteries. Be mindful of insert batteries with the correct polarity (+/-) as indicated. Remove all exhausted batteries. Rechargeable batteries are only to be charged under adult supervision. Rechargeable batteries are to be removed from the item before being charged. Non-rechargeable batteries are not to be recharged. The supply terminals are not to be short-circuited. Always dispose of exhausted batteries properly. Do NOT dispose of batteries in fire, they may leak or explode.

Warning! This item is not a toy. For decoration only. Small parts, choking hazard. This product is intended for use by persons 15 years of age and older. Not intended for use by children ages 14 years and younger.

IT CHAPTER 2 and all related characters and elements © &™ WBEI. (s19)

Requires 4 AA batteries (not included)

ALL NEW MATERIALS: METAL, FOAM, PLASTIC, POLYESTER

Surface washable only. MADE IN CHINA

WARNING
DO NOT TURN ITEM ON UNTIL YOU HAVE COMPLETELY FINISHED ASSEMBLY. STAY CLEAR OF ITEM WHILE OPERATING. DO NOT PLACE ITEM ON UNEVEN GROUND. DO NOT PLACE WEIGHT ON ITEM WHILE IN OPERATION. ** FOR INDOOR USE ONLY**

STOP DO NOT RETURN THIS ITEM TO THE STORE! If experiencing technical difficulties, please go to www.tekkydesign.com for assistance.

